



Springfield Community Report

2025

Table of Contents

PART 1

Introduction

- 3 Executive summary
- 4 Service area
- 5 Population overview
- 6 Root causes

PART 2

Areas of focus

- 9 Summary

Mental health

- 11 Anxiety and depression
- 11 Death by suicide
- 12 Substance use

Heart health

- 14 High blood pressure
- 15 Ischemic heart disease
- 15 Heart failure

Other areas of interest

- 16 Summary
- 17 Cancer
- 17 Diabetes
- 17 Lung health
- 18 Communicable disease
- 18 Sexually transmitted infections
- 18 Vector-borne illness

PART 3

Closing remarks

- 19 Conclusion
- 20 Dissemination
- 21 Health services available
- 22 Acknowledgements
- 22 Access data
- 23 Citations

PART 1

Executive summary



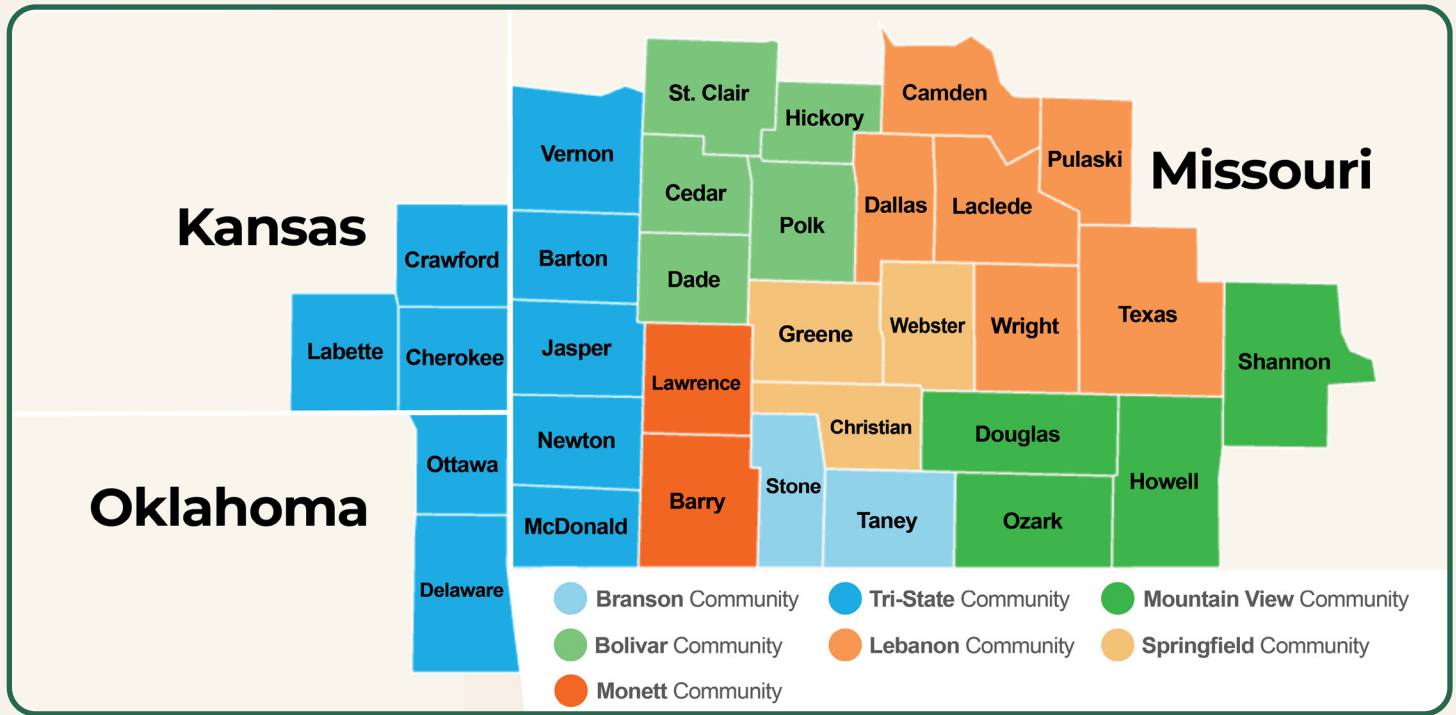
Since 2016, hospital systems, local public health agencies (LPHAs) and other health care partners in the greater Ozarks have worked together to release comprehensive Community Health Needs Assessments (CHNAs) every three years. This group, known as the Ozarks Health Commission (OHC), released community-level reports in 2016, 2019 and 2022. For the fourth iteration, the 2025 assessment has been compiled into community-level and regional snapshots, continuing the regional scope introduced in 2022.

Health care partners and LPHAs develop the results of these assessments into Community Health Improvement Plans (CHIPs). Organizations use CHIPs to target areas of health need and disparity in communities and create actionable plans to make them better over time.

The scope of the OHC region includes 33 counties across three states. These counties make up seven different communities, who each develop reports based on their community-level data. Information about data collection can be found in the OHC Regional Report.

The following is the 2025 Springfield Community CHNA. This report aims to be a valuable resource for health care partners, civic organizations and people who live, work and seek health care in the Springfield Community.

Service area



The Springfield Community includes Christian, Greene and Webster counties in Missouri. It encompasses the service areas of Mercy Hospital Springfield, CoxHealth, the Springfield-Greene County Health Department, the Christian County Health Department, the Webster County Health Unit and Burrell Behavioral Health.

More than 428,000 residents call the Springfield Community home. Between 2010 and 2020, the total population increased by 10%. The growth of the Springfield Community defies the population stagnation or decline in most other CHNA communities within the last decade. Springfield growth also outpaces Missouri, which grew just under 3% from 2010 to 2020.



Population overview

The Springfield Community population is evenly split between men and women. 74% of the population live in urban areas, while 26% live in rural areas.

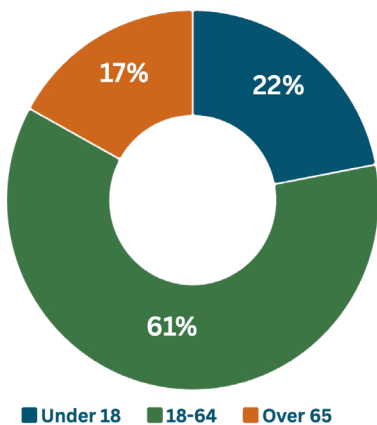
Of the total population in the Springfield Community, 22% are under the age of 18, 61% are between the ages of 18-64, and 17% are age 65 or older.

The majority of Springfield Community residents (88%) identify as non-Hispanic White. Just over 2% identify as non-Hispanic Black. About 4% of residents identify as Hispanic or Latino. Almost 2% identify as non-Hispanic Asian and 4% identify as non-Hispanic multiple races.

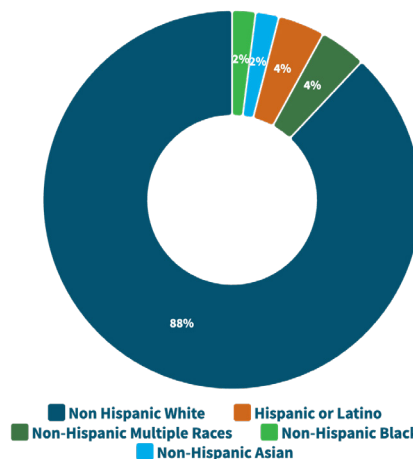
TOP 10 LANGUAGES SPOKEN IN THE SPRINGFIELD COMMUNITY

1. English
2. Spanish
3. German/West Germanic languages
4. Indo-European languages
5. Russian, Polish or other Slavic languages
6. Asian and Pacific Islander languages
7. Other/unspecified languages
8. Mandarin and Cantonese
9. Vietnamese
10. Tagalog (incl. Filipino)

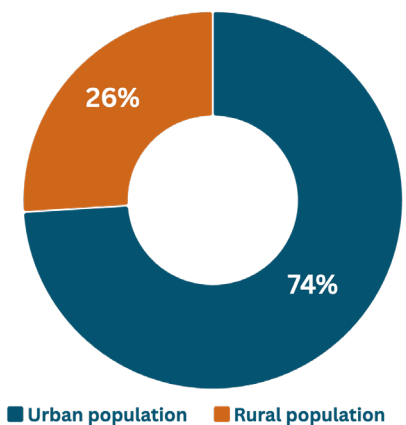
POPULATION BY AGE



POPULATION BY RACE AND ETHNICITY



RURAL VS. URBAN POPULATION



Root causes



Each person’s health and health care paths are different, but there are certain root causes that can contribute to poor health outcomes. Things like access to medical care, financial stability and stigma toward certain conditions can prevent a person from taking preventative actions for their health, seeking care or changing their lifestyle.

The following root causes are most frequently cited in the Springfield Community as barriers to health:

Access to care

DEFINITION

Access to care is the ability and ease for a person to receive timely, appropriate, local health services. It impacts nearly all health issues.¹

IMPACT IN SPRINGFIELD COMMUNITY

Community members most often cite scheduling difficulties, lack of awareness about available resources and finances as their largest barriers to accessing health care.

The Springfield Community is a major health care hub in the region, especially in Greene County. This concentration of services is beneficial for access overall. However, it can lead to gaps in access for rural populations within their communities and an overwhelming demand within Greene County. This is especially true for mental health care.

Non-health care costs

DEFINITION

Living costs can influence a person's ability to prioritize healthy choices.² Individuals may have to choose between paying for housing, childcare, or transportation over preventative health care expenses or nutritious foods.

IMPACT IN SPRINGFIELD COMMUNITY

Transportation access and housing costs greatly affect the Springfield Community. On average, half of household income is spent just on housing and transportation. For residents who rely on childcare outside of the home, these costs amount to 28% of household income on average. These cost burdens directly impact health in the Springfield Community.

Physical activity

DEFINITION

Exercise is vital for overall health. Lack of physical activity or access to exercise opportunities can lead to negative health outcomes, including poor mental and heart health.³

IMPACT IN SPRINGFIELD COMMUNITY

One in ten residents report that they have not been physically active within the last 12 months. The rate of fitness and recreation facilities in the community are just below the overall rate for the state of Missouri. However, access in rural areas, especially to nearby parks, is lower when compared to urban areas of the Springfield Community.

Residents also noted chronic and mental health conditions as barriers to regular exercise and physical activity. These conditions can include symptoms like pain, low energy and difficulty breathing.

Q: Have you gone without needed medical care in the past year? If yes, why?

A: "Services were not covered. Copays [too] high. Cost of medications [too] high."

- Community Survey, 2024

Q: How do living costs influence a person's ability to prioritize health choices?

A: "Obviously [substance use] it's just not their primary concern...when they're sleeping on a cot in a community center because it is 32 degrees or below outside."

- Community Partner, 2024

Nutrition

DEFINITION

A healthy and balanced diet is another factor that affects overall health. In adults, eating healthy foods can help maintain a healthy weight and lower the risk of heart disease, type 2 diabetes and some cancers.⁴

DEFINITION IMPACT IN SPRINGFIELD COMMUNITY

About 17% of people in the Springfield Community do not regularly eat healthy meals. Time, interest and financial barriers are the most common reasons the community does not consume healthy food.

The rate of food insecurity in the Springfield Community sits slightly higher than the state average, and almost one half of the food insecure population is not eligible for food assistance through the federal Supplemental Nutrition Assistance Program (SNAP).

Stigma

DEFINITION

Stigma refers to negative attitudes, beliefs, and stereotypes people may hold toward those who experience health conditions.⁵ Stigma can affect a person's desire or ability to seek care.

IMPACT IN SPRINGFIELD COMMUNITY

Community members and partners frequently identify stigma as a barrier to seeking care and improving overall health. This is especially true in reference to mental health care and among historically marginalized populations.

Q: In the past 12 months, did you regularly eat healthy meals? If not, why?

A: “[We don’t always have] running water or propane.”

- Community Survey, 2024

Q: How does stigma impact a person's health?

A: “[We must make sure] we’re creating welcoming spaces for people where they will actually seek out health care.”

- Community Leader, 2024

PART 2

Areas of focus



For the 2025 iteration of the CHNA, the Springfield Community chose to focus in-depth on two areas of focus: mental health and heart health. These two health issues rose to the top of the priority list due to prevalence and affected populations. They will serve as priority topics for the forthcoming CHIP.

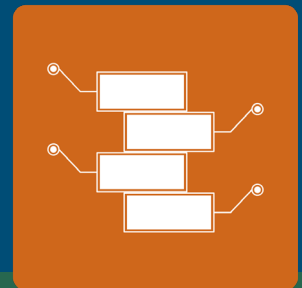
Each area of focus will dive into specific conditions and the populations in the Springfield Community who are most affected. Each condition will also contain attributions to their most common root causes, as defined in the previous section.



MENTAL HEALTH



HEART HEALTH



OTHER AREAS OF INTEREST



AREAS OF FOCUS

Mental health



ROOT CAUSES:

Access to care, stigma and non-health care costs

Over the last decade, the Springfield Community has continually identified mental health and substance use as priority concerns. While the mental health provider to patient ratio is higher in the Springfield Community compared to the OHC region, the substance use provider to patient ratio is lower. In both instances, the demand for services outweighs available care.

Efforts to develop upstream care and support practices, along with stigma reduction efforts, have made a positive impact on mental health and substance use in the Springfield Community. However, people in nearly every demographic group experience poor outcomes at a greater rate than neighbors across the state and the OHC region.



DEPRESSION AND ANXIETY



SUICIDE MORTALITY



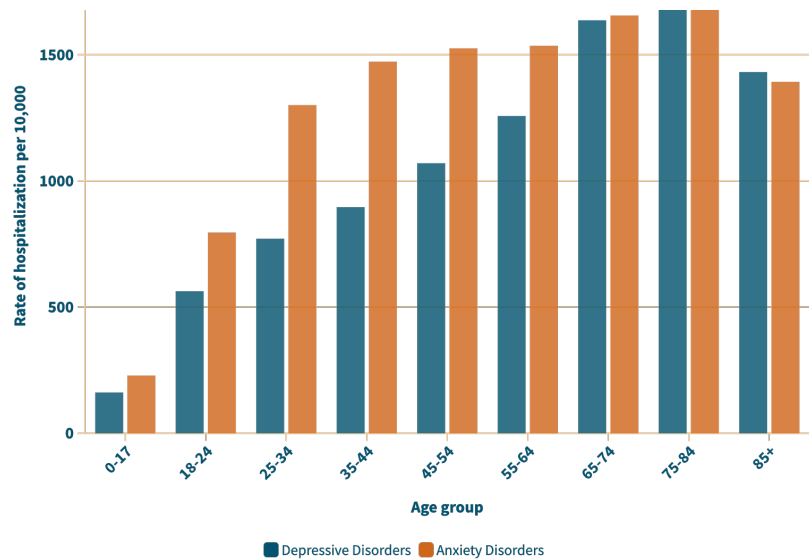
SUBSTANCE USE

Anxiety and depression

The Springfield Community shows higher rates of anxiety and depression than Missouri and the OHC region. Utilization of services for these conditions is 1.5 times higher in the Springfield Community than throughout the OHC region.

Anxiety and depression impact older adults at higher rates.

RATES OF ANXIETY AND DEPRESSION BY AGE



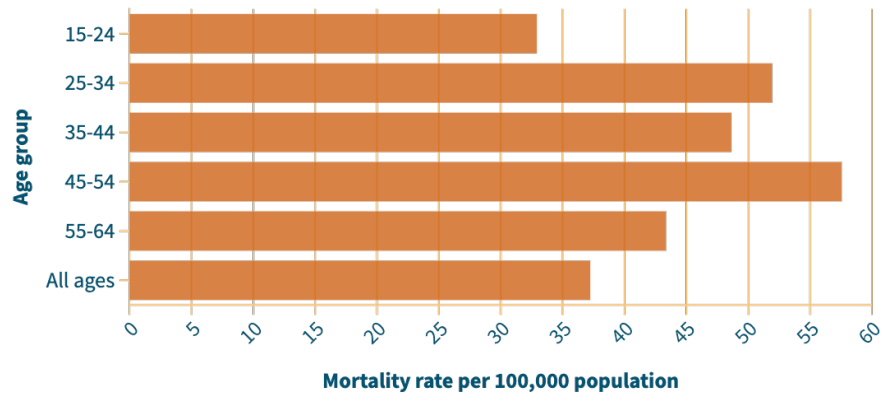
Suicide mortality and ideation

The Springfield Community's suicide mortality rate is unchanged since the 2022 CHNA and continues to be greater than the state and the OHC region. This is especially true for males.

In addition, diagnoses of suicidal ideation are high in the Springfield Community when compared to the OHC region and the state. Ideation includes having thoughts or plans of completing suicide. Rates of suicidal ideation are highest among Black individuals in the Springfield Community.

Generally, middle-aged adults in the Springfield Community are more likely to die by suicide, while younger adults are more likely to experience suicidal ideation. This indicates an opportunity for early interventions.

MALE SUICIDE MORTALITY RATE BY AGE GROUP





Substance use

Hospital visits due to drug use remain high in the Springfield Community compared to the OHC region and the state. In 2022, deaths from drug overdose in this community slightly decreased after a rapid increase in 2020.

In recent years, there has been an increased effort to combat high rates of drug overdose deaths. One result of these efforts is the widespread distribution of naloxone in the community. Naloxone is a medication that reverses the effects of opioid overdose.

Beyond opioids and other drugs, tobacco, marijuana, and alcohol use are also of notice in the Springfield Community.

Among middle and high school students surveyed in 2024, 8% reported recently using e-cigarettes. This is a slight decrease from 9% in 2022. During the same two-year period, youth alcohol consumption fell from 8% to 7%, but recent marijuana use increased from 4% to 6%.⁶

For adults, almost one in five in the Springfield Community are current smokers. A similar amount of adults also report excessive consumption of alcohol. The Springfield Community's excessive drinking rate is slightly lower than Missouri's. However, it is still concerning given the link between heavy alcohol use and poor health outcomes such as cancer, mental health conditions and

In 2023,
there was
45 times
more naloxone
available in the
Springfield
Community
than in 2018.



AREAS OF FOCUS

Heart health



ROOT CAUSES:

Access to care, nutrition, physical activity

Poor heart health is the leading cause of death for those living in the Springfield Community. While these conditions are often associated with the elderly population, the effects can be felt much earlier. Often, high blood pressure progresses to heart disease, and heart disease leads to heart failure. These conditions result in high health care costs, which are projected to increase in the coming decades.^{viii}

Factors that can lead to poor heart health include age, race, family history, being overweight, and lifestyle factors like tobacco use or a lack of exercise. Addressing lifestyle factors early can improve outcomes and promote better overall health.



HIGH BLOOD PRESSURE



ISCHEMIC HEART DISEASE



HEART FAILURE

High blood pressure

High blood pressure, or hypertension, is a common chronic condition that can be dangerous or life-threatening if untreated.

According to Mayo Clinic, the risk of developing high blood pressure increases with age. High blood pressure is more common in men until about age 64, and women are more likely to develop the condition beyond age 65. High blood pressure is also more common among Black people, for whom the condition tends to develop sooner in life.⁸

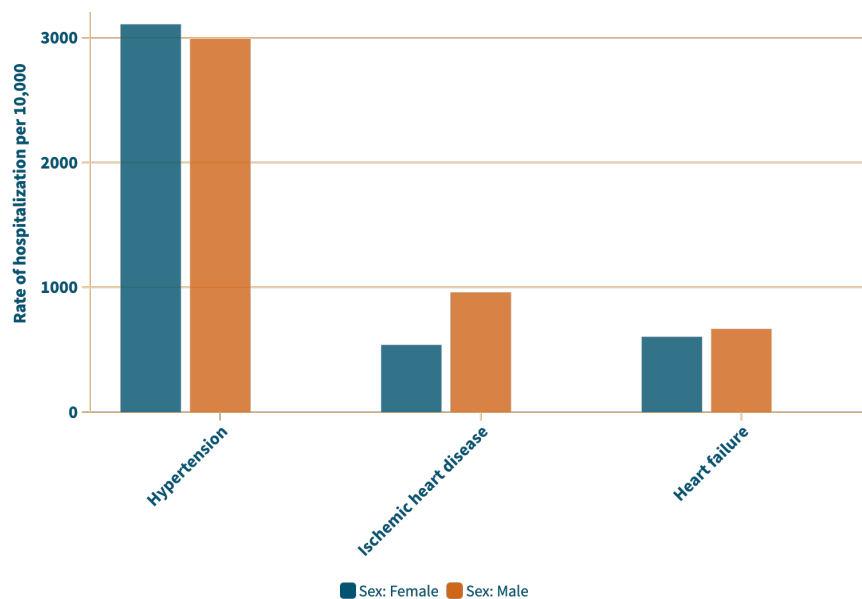
These population-based trends are reflected in the Springfield Community, where individuals who are over age 85, women or Black exhibited the highest rates of high blood pressure in hospital visits.

Ischemic heart disease

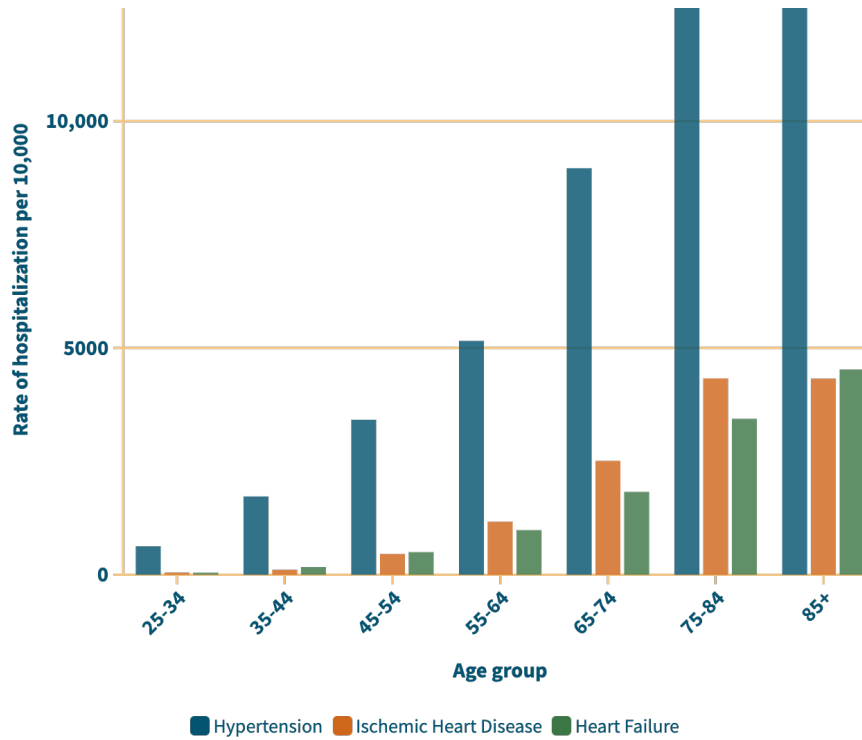
According to the American Heart Association, ischemic heart disease (also known as coronary artery disease or coronary heart disease) is heart damage caused by narrowed heart arteries. Narrowed arteries make it more difficult for blood and oxygen to reach the heart. This can cause chest pain or discomfort and lead to heart attack.⁹

Hospital visit data shows that Springfield Community patients presented with ischemic heart disease at a rate exceeding the OHC region. Like many chronic conditions, ischemic heart disease acutely impacts older adults. Men also exhibit higher rates compared to women.

HEART HEALTH HOSPITALIZATIONS BY SEX



HEART HEALTH HOSPITALIZATIONS BY AGE GROUP



Heart failure

Heart failure is a condition that describes a weakened heart that is no longer able to keep up with its workload (American Heart Association). Individuals with heart failure experience symptoms such as fatigue, shortness of breath, and difficulty completing everyday activities like climbing stairs or carrying groceries. While there is usually no cure, many people with heart failure lead an enjoyable life when the condition is managed with medication and a healthy lifestyle.¹⁰

Community Feedback

Community partners were invited to a session to review the areas of focus. Partners were asked to identify populations within the Springfield Community most vulnerable to mental health and heart health conditions. Feedback primarily aligned with the data presented here. However, partners additionally called attention to those experiencing chronic stress, anxiety and social isolation, postpartum women, LGBTQ+ individuals, people experiencing poverty and unsheltered or unhoused individuals.

AREAS OF FOCUS

Other areas of interest



In addition to areas of focus for the Springfield Community, other conditions have been identified as areas of interest. These are public health issues for this community but are not an area of focus for this assessment. They are included to provide a broad snapshot of other conditions that affect the Springfield Community.



Cancer



Diabetes



Lung health



Communicable disease



Sexually transmitted infections



Vector-borne illness



Cancer

In the Springfield Community, cancer is the second leading cause of death.

Breast cancer rates are 124 per 100,000 females. This number is higher than the OHC region at 111 per 100,000 females.

Prostate cancer rates are 105 per 100,000 males. This number is higher than both the OHC region (92 per 100,000) and the state (96 per 100,000).

Diabetes

Diabetes was a priority health issue in the 2022 Springfield Community CHNA report.

There are three types of diabetes: Type 1, Type 2 and gestational.

Type 1 diabetes is most often genetic and diagnosed in childhood. In a three-year period, 82 per 10,000 people in the Springfield Community were treated for Type 1 diabetes.

Type 2 has a genetic component but is more likely impacted by lifestyle factors.

In a three-year period, 1,466 per 10,000 people in the Springfield Community were treated for Type 2 diabetes.

Gestational diabetes can impact pregnant people. It is routinely screened for in the second trimester. In a three-year period, 22 per 10,000 people in the Springfield Community were treated for gestational diabetes.



Lung health

Chronic lung conditions including chronic obstructive pulmonary disease (COPD) and asthma are incurable and cause mild to severe breathing difficulties. The conditions may co-occur with other chronic ailments and contribute to poor health outcomes. COPD is often, but not always, associated with a history of smoking or tobacco exposure.

The Springfield Community exhibits higher rates for both asthma (670.3 per 10,000) and COPD (778.1 per 10,000) than the OHC region (463.9 per 10,000 – asthma, 754.9 per 10,000 – COPD), and higher rates of asthma than the state (566.5 per 10,000). In our community, asthma disproportionately impacts women, older adults and Black individuals. COPD rates are highest among older adults.



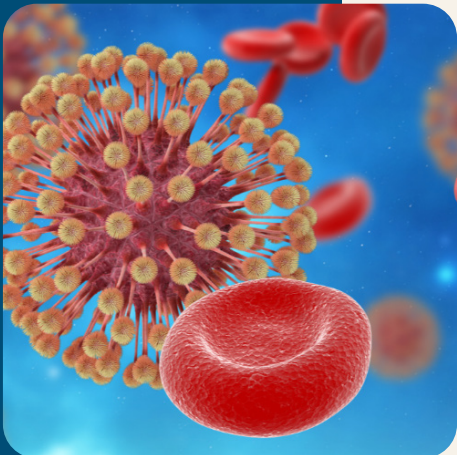


Communicable diseases

Communicable diseases spread from person to person, including respiratory illnesses. The severity of some of these illnesses can be reduced through vaccination.

Pertussis, also known as whooping cough, is a respiratory illness that is especially dangerous for infants, young children and people with pre-existing health conditions.

In 2023, there were fewer than 10 confirmed cases of pertussis. In 2024, more than 100 cases were confirmed (or probable) in the Springfield Community.



Sexually transmitted infections

Sexually transmitted infections (STIs) are spread through sexual contact. They are preventable and treatable.

Syphilis is a bacterial infection that develops in stages. Each stage of syphilis has different symptoms.

From 2019-2023, the rate of syphilis cases increased almost five times in the Springfield Community.

Human immunodeficiency virus (HIV) is a virus that attacks the body's immune system. Without treatment, it can lead to acquired immunodeficiency syndrome (AIDS). HIV can also be spread through intravenous (IV) drug use.

In the Springfield Community, 170 per 100,000 people are living with HIV. HIV primarily affects Greene County.



Vector-borne illness

Engagement with the Springfield Community's abundant outdoor resources comes with increased need for awareness and prevention of illnesses from insects, particularly Alpha-gal Syndrome (AGS), Lyme disease and ehrlichiosis.

AGS, Lyme disease and ehrlichiosis are caused by bites from infected ticks.

Tick-borne illnesses in Missouri are generally increasing.

While Alpha-gal is not a reportable condition, it is an important public health concern that is impacting Missourians.

PART 3

Conclusion



While this overview of health in the Springfield Community is not comprehensive, it gives an important glimpse into areas of concern reflected in both data and community feedback. The 2025 assessment will be used to inform public health and health care initiatives. These initiatives will be outlined in a forthcoming Community Health Improvement Plan.

Dissemination

The OHC regional report and all community-level reports are available to the public through various channels.

Websites

Ozarks Health Commission

www.ozarkshealthcommission.org

CoxHealth

www.coxhealth.com

Mercy Hospital

mercy.net

Printed copies

Printed copies will be available by request through health care partners and LPHAs. Please refer to organization websites or contact an organization directly.

Social media

CHNA and CHIP announcements will be made via social media channels.

Christian County Health Department

www.facebook.com/ChristianCountyHealth/

Burrell Behavioral Health

<https://www.facebook.com/BurrellCenter>

<https://x.com/BurrellCenter>

CoxHealth

www.facebook.com/coxhealth/

<https://x.com/CoxHealth>

Mercy Hospital Springfield

www.facebook.com/MercyHospitalSpringfield/

<https://x.com/mercysgf>

Springfield-Greene County Health

www.facebook.com/SGCHD/

Webster County Health Unit

www.facebook.com/WebsterCountyHealth

Health services available

AIDS Project of the Ozarks (APO)

apo-ozarks.org

Arc of the Ozarks

thearcoftheozarks.org

Burrell Behavioral Health

burrellcenter.com/get-help

Christian County Health Department

christiancountyhealth.com

CoxHealth

doctors.coxhealth.com/

coxhealth.com/services

Eustasis Psychiatric and Addiction Health

eustasis.com

Jordan Valley Community Health Center

jordanvalley.org

Magers Health and Wellness Center

health.missouristate.edu

Mental Health 417

mentalhealth417.com/

Mercy Hospital Springfield

mercy.net/search/service

mercy.net/search/doctor

MSU Care

msucare.missouristate.edu

Seniorage Area Agency on Aging

senioragemo.org

Springfield-Greene County Health

health.springfieldmo.gov/

Webster County Health Unit

webstercohealth.com/

Vaccine417

vaccine417.com

Acknowledgements

Thank you to Springfield Community partners and residents for contributing to this assessment through your feedback. Your contributions provide rich context to the vast health care data compiled for this report.

Thank you to the OHC Steering Committee for your collaboration and resource sharing during every step of the CHNA process.

Thank you to the Springfield Community representatives in the OHC Steering Committee for your contributions toward data collection and creation of the report.

Access data

Publication date

May 2025

Citations

- ¹ “Health Care Access and Quality.” U.S. Department of Health and Human Services, Office of Disease Prevention and Health Promotion. <https://odphp.health.gov/healthypeople/objectives-and-data/browse-objectives/health-care-access-and-quality>.
- ² “Economic Stability.” U.S. Department of Health and Human Services, Office of Disease Prevention and Health Promotion. <https://odphp.health.gov/healthypeople/objectives-and-data/browse-objectives/economic-stability>.
- ³ “Benefits of Physical Activity.” Centers for Disease Control and Prevention. Last modified April 24, 2024. <https://www.cdc.gov/physical-activity-basics/benefits/index.html>.
- ⁴ “Benefits of Healthy Eating for Adults.” Centers for Disease Control and Prevention. Last modified February 14, 2024. <https://www.cdc.gov/nutrition/php/resources/healthy-eating-benefits-for-adults.html>.
- ⁵ “Mental Health Stigma.” Centers for Disease Control and Prevention. Last modified January 31, 2025. <https://www.cdc.gov/mental-health/stigma/index.html>.
- ⁶ “2024 Missouri Student Survey County Reports.” Missouri Department of Mental Health. <https://dmh.mo.gov/alcohol-drug/mobhew/missouri-student-survey-reports/2024>.
- ⁷ “Facts About Excessive Drinking.” Centers for Disease Control and Prevention. Last modified October 7, 2024. <https://www.cdc.gov/drink-less-be-your-best/facts-about-excessive-drinking/>.
- ⁸ Mayo Clinic Staff. “High blood pressure (hypertension).” Mayo Clinic. Last modified February 29, 2024. <https://www.mayoclinic.org/diseases-conditions/high-blood-pressure/symptoms-causes/syc-20373410>.
- ⁹ “Ischemic Heart Disease and Silent Ischemia.” American Heart Association. Last modified December 11, 2024. <https://www.heart.org/en/health-topics/heart-attack/about-heart-attacks/silent-ischemia-and-ischemic-heart-disease>.
- ¹⁰ “What is Heart Failure?.” American Heart Association. Last modified March 22, 2023. <https://www.heart.org/en/health-topics/heart-failure/what-is-heart-failure>.



**2025 Community Health
Needs Assessment**