

# Mercy Hospital Tishomingo Community Health Needs Assessment

---



February 2025

**Table of Contents**

Introduction ..... 3

    Report Outline ..... 4

Previous Community Health Needs Assessment- Priorities, Implementation, and Evaluation..... 4

Mercy Hospital Tishomingo Medical Services Area Demographics ..... 5

    Figure 1. Mercy Hospital Tishomingo Medical Service Areas..... 6

    Table 1. Population of Mercy Hospital Tishomingo Medical Service Area ..... 7

    Table 2. Existing Medical Services in the Mercy Hospital Tishomingo Medical Services Area..... 8

    Table 3. Percent of Total Population by Age Group for Mercy Hospital Tishomingo Medical Service Areas, Johnston County and Oklahoma ..... 9

    Table 4. Percent of Total Population by Race and Ethnicity for Mercy Hospital Tishomingo Medical Service Areas, Johnston County and Oklahoma..... 11

Summary of Community Input for CHNA ..... 12

    Economic Conditions of Johnston County and Economic Impact of Health Sector..... 12

        Table 5. Economic Indicators for Johnston County, the State of Oklahoma and the Nation ..... 13

        Table 6. Education Data for Johnston County and the State of Oklahoma..... 14

        Table 7. Payer Source Data for Johnston County and the State of Oklahoma..... 15

Health Data..... 16

    Table 8. Health Factors ..... 17

    Table 9. Health Outcomes ..... 18

Community Survey Methodology and Results ..... 19

    Table 10. Zip Code of Residence ..... 20

    Table 11. Type of Specialist Visits..... 21

    Figure 2. Summary of Hospital Usage and Satisfaction Rates ..... 22

    Table 12. What do you think are the biggest health problems in Johnston County? ..... 24

    Table 13. What additional health and wellness services would you like to see offered in Johnston County? ..... 25

Community Health Needs- Identification of Priorities ..... 26

Community Health Needs Assessment Marketing Plan ..... 28

Appendix A- Hospital Services/Community Benefits ..... 29

**Mercy Hospital Tishomingo..... 29**

Appendix B Community Input Participants.....	31
Appendix C Economic Impact Summary .....	32
Appendix D- Survey Form and Survey Results.....	33

## Introduction

New requirements for nonprofit, 501 (c)(3), hospitals were enacted under the Patient Protection and Affordable Care Act (ACA), passed on March 23, 2010. One of the most significant of the new requirements is the Community Health Needs Assessment (CHNA) that must be conducted during taxable years after March 23, 2012 and submitted with IRS form 990. A CHNA must then be completed every three years following.

While the requirements are fairly new, the IRS has made strides in defining hospitals that must complete the CHNA as well as details of what is expected in the CHNA report to be submitted. At this time the only entities that must complete the CHNA are hospital organizations defined as:

- An organization that operates a State-licensed hospital facility
- Any other organization that the Secretary determines has the provision of hospital care as its principal function or purpose constituting the basis for its exemption under section 501 (c)(3).

The general goal behind the requirement is to gather community input that leads to recommendations on how the local hospital can better meet and serve residents' needs. The community input is typically derived from a community survey and a series of open meetings. Local health data are presented. Community members then identify and prioritize their top health needs.

After listening to community input, the hospital defines an implementation strategy for their specific facility. The implementation strategy is a written plan that addresses each of the health needs identified in the community meetings. To meet Treasury and IRS guidelines an implementation strategy must:

- Describe how the hospital facility plans to meet the health need, or
- Identify the health need as one the hospital facility does not intend to meet and explain why the hospital facility does not intend to meet the health need<sup>1</sup>

After the needs are identified that the hospital can address, the implementation strategy must take into account specific programs, resources, and priorities for that particular facility. This can include existing programs, new programs, or intended collaboration with governmental, nonprofit, or other health care entities within the community.<sup>2</sup>

---

<sup>1</sup> Internal Revenue Service. 2011. Notice and Requests for Comments Regarding the Community Health Needs Assessment Requirements for Tax-Exempt Hospitals. Internal Revenue Bulletin: 2011-30.

<sup>2</sup> Ibid

The facility must make the recommendations and implementation strategy widely available to community members. The facility must adopt the implementation strategy in that same taxable year.

## **Report Outline**

This document discusses the steps taken to conduct a CHNA for Mercy Hospital Tishomingo in 2024. It begins with a description of the hospital's steps to addressing priorities identified during the 2021 CHNA along with the impacts, followed by a description of the medical service area, including a demographic analysis, and then summarizes each meeting that took place during the CHNA process. The report concludes by listing the recommendations that came out of the process and presenting the hospital's implementation strategy and marketing plan.

This report along with the implementation strategy was presented and approved by the governing board on February 21, 2025.

## **Previous Community Health Needs Assessment- Priorities, Implementation, and Evaluation**

Mercy Hospital Tishomingo worked with the Oklahoma Office of Rural Health in 2021 to complete their third Community Health Needs Assessment. The previous assessments were completed in 2018, 2015, and 2012/2013. During that time, health concerns were identified by community members and then prioritized by community members in focus group-style meetings. The following identifies each priority, implementation taken, and an evaluation or impact of the implementation.

Area of concern: COPD

Activity 1: Development of OP Pulmonary Rehab Program

Created a Respiratory Therapy department to provide cardiopulmonary services and education to our inpatients and outpatients.

An OP Pulmonary Rehab Program has been implemented and includes capacity for OP Pulmonary Function Testing and Smoking Cessation.

We received a grant to help cover the cost of the Pulmonary Function Testing Unit and later another grant to expand it to include capacity for nitrogen washing. We experienced turnover in the respiratory therapy department that impacted service but have now performed approximately 25 assessments.

Area of concern: Obesity

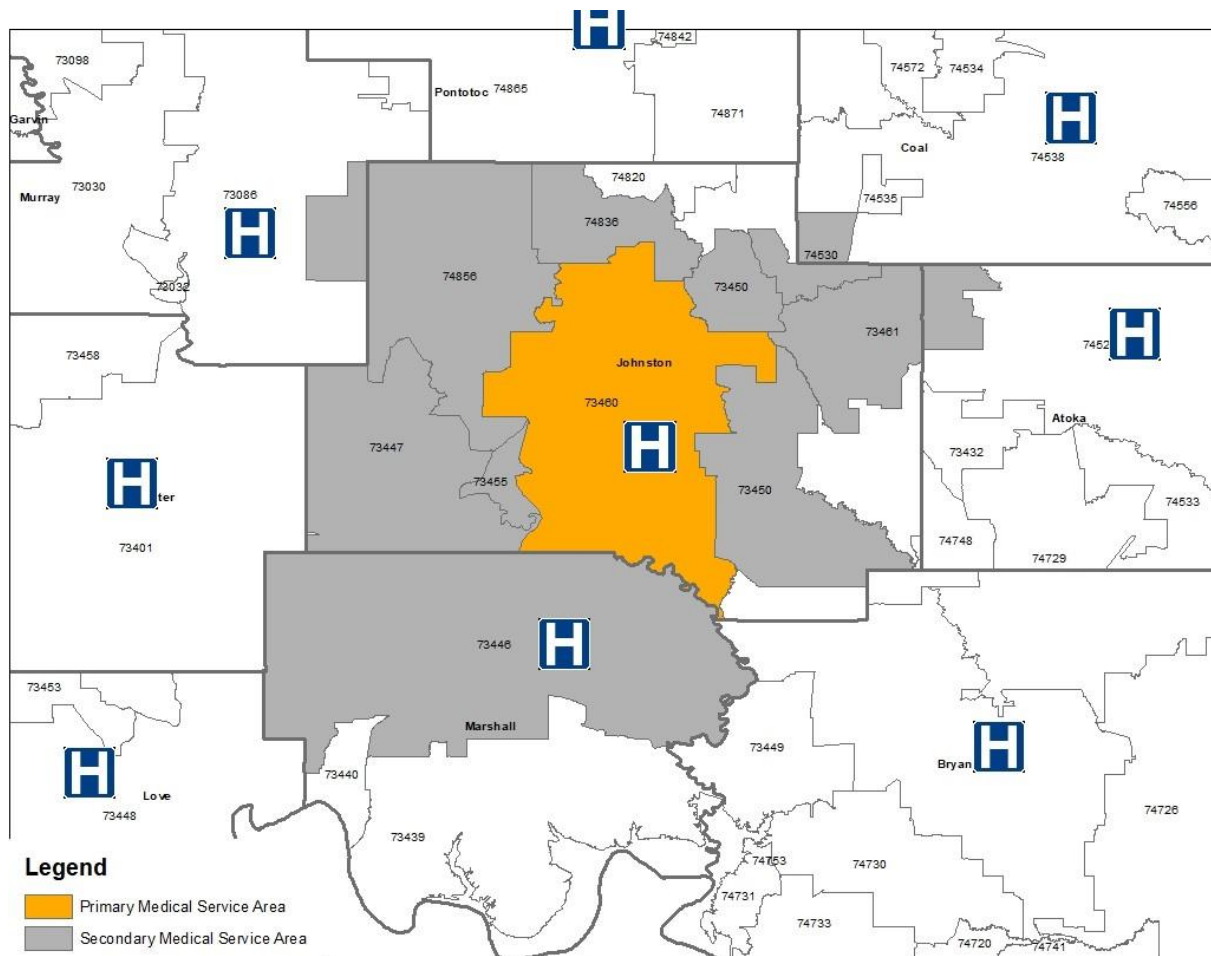
Activity 1: Provided support for grants to fund new community park in Tishomingo. Grant funds were used to provide equipment that would be accessible to differently abled children accessing the park. This allows them an opportunity to engage in exercise and play.

Activity 2: Provided support for a grant to provide lighting and fencing at the park to improve access and safety.

Although estimates of those accessing the public park space are not readily available, it has potential to positively impact all Tishomingo residents. It is the only park in the section of town where it is located and the only park offering accessible equipment.

### **Mercy Hospital Tishomingo Medical Services Area Demographics**

Figure 1 displays the Mercy Hospital Tishomingo medical services area. Mercy Hospital Tishomingo and all area hospitals are delineated in the figure. The surrounding hospitals are identified in the table below by county along with their respective bed count.



**Figure 1. Mercy Hospital Tishomingo Medical Service Areas**

City	County	Hospital	No. of Beds
<i>Tishomingo</i>	<i>Johnston</i>	<i>Mercy Hospital Tishomingo</i>	25
Atoka	Atoka	Atoka County Medical Center	25
Durant	Bryan	AllianceHealth Durant	148
Healdton	Carter	Mercy Hospital Healdton	22
Coalgate	Coal	Coal County General Hospital	20
Madill	Marshall	AllianceHealth Madill	25
Sulphur	Murray	Arbuckle Memorial Hospital	25
Ada	Pontotoc	Mercy Hospital Ada	156

As delineated in Figure 1, the primary medical service area of Mercy Hospital Tishomingo includes the zip code area of Tishomingo. The primary medical service area experienced a population increase of 3.0 percent from the 2000 Census to the 2010 Census (Table 1). This same service area experienced a decline in population of 1.8 percent from the 2010 Census to the 2020.

The secondary medical services area is comprised of the zip code areas of Mill Creek, Connerville, Milburn, Bromide, Wapanucka, Ravia, Mannsville, and Madill. The secondary medical service area experienced an increase in population of 13.0 percent from 2000 to 2010 followed by a decline in population of 5.5 percent from 2010 to the 2020 Census.

**Table 1. Population of Mercy Hospital Tishomingo Medical Service Area**

Population by Zip Code	2000 Population	2010 Population	2020 Population	% Change 2000-2010	% Change 2010-2020
<i>Primary Medical Service Area</i>					
73460 Tishomingo	4,609	4,747	4,661	3.0%	-1.8%
<b>Total</b>	<b>4,609</b>	<b>4,747</b>	<b>4,661</b>	<b>3.0%</b>	<b>-1.8%</b>
<i>Secondary Medical Service Area</i>					
74856 Mill Creek	771	782	710	1.4%	-9.2%
74836 Connerville	208	171	211	-17.8%	23.4%
73450 Milburn	1,108	1,248	1,156	12.6%	-7.4%
74530 Bromide	210	214	178	1.9%	-16.8%
73461 Wapanucka	762	795	825	4.3%	3.8%
73455 Ravia	626	673	574	7.5%	-14.7%
73447 Mannsville	1,184	1,205	882	1.8%	-26.8%
73446 Madill	6,750	8,042	7,873	19.1%	-2.1%
<b>Total</b>	<b>11,619</b>	<b>13,130</b>	<b>12,409</b>	<b>13.0%</b>	<b>-5.5%</b>

SOURCE: Population data from the U.S. Bureau of Census, Decennial Census 2000, 2010 and 2020 (June 2024)

Table 2 displays the current existing medical services in the primary service area of the Mercy Hospital Tishomingo medical services area. Most of these services would be expected in a service area of Tishomingo’s size: four physician offices and clinics, two dental offices, two chiropractic offices. Mercy Hospital Tishomingo is a 25-bed critical access hospital located in Johnston County. The hospital provides acute and swing bed inpatient services, 24-hour emergency department, X-ray, CT, Ultrasound, outpatient services including infusion and laboratory. A complete list of hospital services and community involvement activities can be found in Appendix A.

**Table 2. Existing Medical Services in the Mercy Hospital Tishomingo Medical Services Area**

<b>Count</b>	<b>Service</b>
1	Hospital: Mercy Hospital Tishomingo
3	Physician offices and clinics
2	Dental offices
2	Chiropractic offices
1	Nursing home
2	Home health providers
1	Hospice provider
1	EMS provider
1	County Health Department: Johnston County
3	Mental health/Behavioral health providers
1	DME provider
4	Pharmacies

In addition to examining the total population trends of the medical service areas, it is important to understand the demographics of those populations. Table 3 displays trends in age groups for the primary and secondary medical service areas as well as Johnston County in comparison to the state of Oklahoma. Overall, the over 65 age group has experienced an increase in population across all geographies from the 2010 Census to the 2020. This cohort accounted for 16.5 percent of the total population at the state level. This is compared to 18 percent of the population of the primary medical service area, 17.3 percent of the secondary medical service area, and 19.7 percent of Johnston County. The 45-64 age group accounts for the largest share of the population in the primary (24.7%) and secondary (24.9%) service areas and Johnston County (25.7%). This is compared to the state share of 24 percent of the total population.

**Table 3. Percent of Total Population by Age Group for Mercy Hospital Tishomingo Medical Service Areas, Johnston County and Oklahoma**

Age Groups	Primary Medical Service Area	Secondary Medical Service Area	Johnston County	Oklahoma
<b>2010 Census</b>				
0-14	20.6%	21.8%	20.2%	20.7%
15-19	7.9%	7.2%	7.5%	7.1%
20-24	7.8%	5.5%	6.3%	7.2%
25-44	22.1%	23.3%	22.6%	25.8%
45-64	24.9%	26.6%	26.9%	25.7%
65+	<u>16.7%</u>	<u>15.7%</u>	<u>16.6%</u>	<u>13.5%</u>
Totals	100.0%	100.0%	100.0%	100.0%
Total Population	4,747	13,130	10,957	3,751,351
<b>2020 Census</b>				
0-14	17.9%	21.8%	18.9%	19.9%
15-19	8.0%	6.7%	6.8%	7.0%
20-24	10.8%	5.5%	7.6%	6.8%
25-44	20.6%	22.8%	21.4%	25.8%
45-64	24.7%	24.9%	25.7%	24.0%
65+	<u>18.0%</u>	<u>18.2%</u>	<u>19.7%</u>	<u>16.5%</u>
Totals	100.0%	100.0%	100.0%	100.0%
Total Population	4,661	12,409	10,272	3,959,353

SOURCE: U.S. Census Bureau, Decennial Census data for 2010 and 2020 (www.census.gov [June 2024]).

Changes in racial and ethnic groups can impact the delivery of healthcare services, largely due to language barriers and dramatically different prevalence rates for specific diseases, such as diabetes. A noticeable trend in Oklahoma is the growth in the Hispanic origin population. In 2010, those of Hispanic origin accounted for 8.9 percent of the total state

population. The 2020 decennial Census suggests that this population group has experienced an increase to 11.9 percent of the total population. This trend is somewhat evident in Johnston County and both medical service areas. The share of the population identified as of Hispanic Origin accounted for 6.3 percent of the primary medical service area's population in 2020 and 20 percent of the secondary medical service area during the same time period. A more notable trend is the share of the Native American population in Johnston County and both service areas. In 2010, this cohort accounted for 13.8 percent of the primary medical service area, 11.5 percent of the secondary medical service area, and 15.5 percent of Johnston County's population. According to the 2020 decennial Census, this cohort accounted for 16 percent of the primary medical service area, 12.2 percent of the secondary, and 16.2 percent of the Johnston County population.

**Table 4. Percent of Total Population by Race and Ethnicity for Mercy Hospital Tishomingo Medical Service Areas, Johnston County and Oklahoma**

Race/Ethnic Groups	Primary Medical Service Area	Secondary Medical Service Area	Johnston County	Oklahoma
<b>2010 Census</b>				
White	72.0%	68.8%	73.1%	72.2%
Black	3.6%	2.0%	1.9%	7.4%
Native American <sup>1</sup>	13.8%	11.5%	15.5%	8.6%
Other <sup>2</sup>	1.4%	10.8%	1.4%	5.9%
Two or more Races <sup>3</sup>	9.2%	6.8%	7.9%	5.9%
Hispanic Origin <sup>4</sup>	3.8%	16.3%	3.9%	8.9%
Total Population	4,747	13,130	10,957	3,751,351
<b>2020 Census</b>				
White	64.5%	61.0%	67.1%	63.5%
Black	4.5%	1.4%	2.4%	7.3%
Native American <sup>1</sup>	16.0%	12.2%	16.2%	8.4%
Other <sup>2</sup>	3.6%	12.5%	2.9%	7.9%
Two or more Races <sup>3</sup>	11.4%	13.0%	11.4%	12.8%
Hispanic Origin <sup>4</sup>	6.3%	20.0%	5.7%	11.9%
Total Population	4,661	12,409	10,272	3,959,353

SOURCE: U.S. Census Bureau, Decennial Census data for 2010 and 2020 (www.census.gov [June 2024]).

## **Summary of Community Input for CHNA**

Community input was gathered through a single community meeting. The meeting was held on October 29, 2024. Data summaries are provided in the following sections. The meeting was held and hosted as a collaboration between Mercy Hospital Tishomingo, the Family Health Center of Southern Oklahoma, and Johnston County Health Department.

Community members who were included to provide input:

- Mercy Hospital Tishomingo
- Family Health Center of Southern Oklahoma
- Johnston County Health Department
- Chickasaw Nation
- INCA Community Action Agency
- Johnston County EMS
- Victory Home Health
- OK Complete Health
- Johnston County Sentinel
- OSU Cooperative Extension Service
- Murray State College
- Mercy Hospital Ada

Mercy Hospital Tishomingo, the Family Health Center of Southern Oklahoma, and Johnston County Health Department worked collaboratively to create an invitation list of stakeholders that included those who could speak to the broader needs of the Johnston County population. This includes a focus of those who can speak to the needs of the low income and racially diverse populations. An initial save the date was emailed to representatives from these organizations followed by a meeting invitation for October 29, 2024.

## **Economic Conditions of Johnston County and Economic Impact of Health Sector**

Economic indicators for Johnston County in comparison to Oklahoma and the United States are outlined in Table 5. Johnston County tends to lag Oklahoma and the United States in terms of per capita income, or the total income divided by the population. Oklahoma as a state tends to lag the national average. The 2023 annual unemployment rate for Johnston County was 3.8 percent. This rate is higher than the state (3.1%) and the nation (3.6%). All of these rates are non-seasonally adjusted. The most recent monthly estimates show Johnston County to be unchanged from 2023. This is higher than the state (3.1%) and lower than the national (3.5%) rates.

The share of individual captured below the poverty threshold for income and household size is calculated by the U.S. Census Bureau. In 2022, the poverty rate for all ages in Johnston County was 20.8 percent. This is higher than the state and national rates. The share of children, or those under the age of 18, was also higher than the state and the national rate. All economic indicators can be found in Table 5.

**Table 5. Economic Indicators for Johnston County, the State of Oklahoma and the Nation**

Indicator	County	State	U.S.
Total Personal Income (2022)	\$472,988,000	\$226,307,998,000	\$21,820,248,000,000
Per Capita Income (2022)	\$45,453	\$56,298	\$65,470
Employment (2023)	4,043	1,845,328	161,037,000
Unemployment (2023)	161	58,180	6,080,000
Unemployment Rate (2023)	3.8%	3.1%	3.6%
Employment (April 2024)*	4,233	1,926,202	161,590,000
Unemployment (April 2024)*	168	60,647	5,894,000
Unemployment Rate (April 2024)*	3.8%	3.1%	3.5%
Percentage of People in Poverty (2022)	20.8%	15.6%	12.6%
Percentage of Under 18 in Poverty (2022)	26.7%	19.7%	16.3%
Transfer Dollars (2022)	\$167,904,000	\$48,710,861,000	\$4,002,084,000,000
Transfer Dollars as Percentage of Total Personal Income (2022)	35.5%	21.5%	18.3%
Medical Benefits as a share of Transfer Payments (2022)	46.2%	40.6%	44.3%

\*State and County estimates are considered preliminary

SOURCES: 2023 Bureau of Labor Statistics; 2022 Bureau of Economic Analysis; 2022 U.S. Census Bureau.

Table 6 displays various education variables for Johnston County. The first three lines are education attainment percentages for the population aged 25 years and greater. In Johnston County, 88.1 percent of the population has at least their high school diploma, 51.1 percent has at least some college, and 20.9 percent of the population has at least a bachelor’s degree. The far-right handed column provides a ranking within the state based on the highest, or most favorable percentages. The free and reduced lunch rate is the share of children in Johnston County who are enrolled in public school and eligible for free and reduced lunches. Johnston County’s rate is 69 percent. This is higher than the state average of 56 percent. This is the 57<sup>th</sup> lowest rate in the state.

**Table 6. Education Data for Johnston County and the State of Oklahoma**

Indicator	County	State	Johnston County Ranking
At Least High School Diploma	88.1%	88.9%	32nd Highest
Some College	51.1%	58.2%	32nd Highest
At Least Bachelor’s Degree	20.9%	27.3%	27th Highest
Free and Reduced Lunch Rate	69.0%	56.0%	57th Lowest

Sources: U.S. Census Bureau, American Community Survey, 2018-2022, National Center for Education Statistics 2021-2022

Table 7 includes payer source data for Johnston County residents in comparison to the state. A ranking is also provided with the lowest percentages as the more favorable ranking. In 2021, 19 percent of individuals under the age of 65 were categorized as uninsured. This is higher than the state rate of 16.9 percent. In terms of children, or those under the age of 19, this rate was 8.6 percent. This was also higher than the state rate of 8.0 percent. In 2024, a total of 25 percent of the population had Medicare as a source of healthcare coverage. Within that total, 15.9 percent had traditional Medicare and 9.1 percent had Medicare Advantage. In 2024, 36.3 percent of the total population had Medicaid as a payer source. A total of 5.8 percent of the total population were dual enrollees in both Medicare and Medicaid.

**Table 7. Payer Source Data for Johnston County and the State of Oklahoma**

Indicator	County	State	Johnston County Ranking
2021 Uninsured rate (under 65)	19.0%	16.9%	44th Lowest
2021 Uninsured rate (under 19)	8.6%	8.0%	35th Lowest
2024 Medicare share of total population	25.0%	20.0%	60th Lowest
2024 Original Medicare (A & B)	15.9%	11.9%	45th Lowest
2024 Medicare Advantage & Other	9.1%	8.1%	54th Lowest
2024 Medicaid share of total population	36.3%	26.0%	67th Lowest
2024 Dual Enrollees (Medicare & Medicaid)	5.8%	3.1%	64th Lowest

Sources: U.S. Census Bureau Small Area Health Insurance Estimates, 2021; Centers for Medicare and Medicaid Services, Medicare Part A and B Recipients by State and County, February 2024 Enrollment Data; Oklahoma Health Care Authority, Total Enrollment by County, April 2024 Enrollment Data

## **Health Data**

Various sources of health data were examined including data from the County Health Rankings and Roadmaps Program through the University of Wisconsin Population Health Institute, and the Robert Wood Johnson Foundation. The County Health Rankings program evaluates counties based on two distinct areas: Health Factors and Health Outcomes.

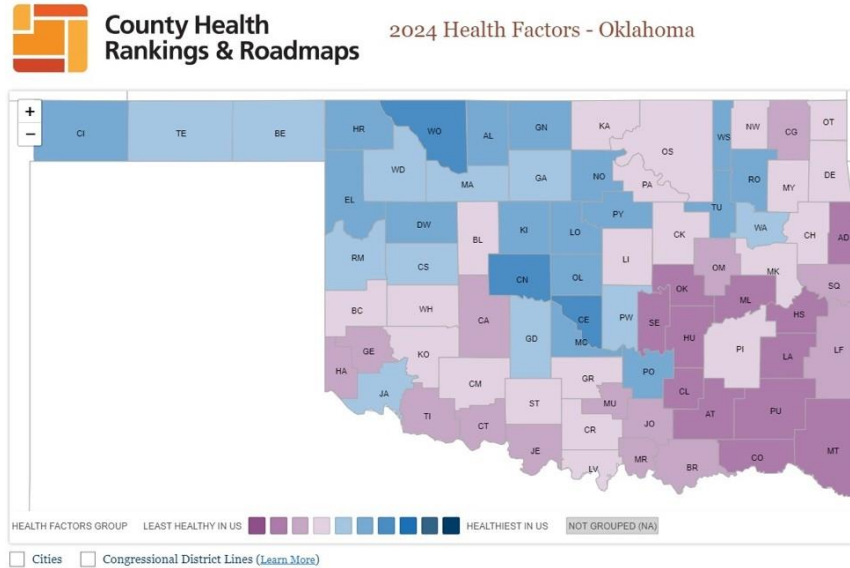
Health factors, considered tomorrow's health, are comprised of health behaviors, clinical care, social and economic factors, and physical environment. Areas of concern include Johnston County's smoking rate, obesity rate the food environment index, and physical inactivity are all less desirable when compared to the state and national averages. Also, the rate of uninsured, population ratio to primary care physicians, preventable hospital stays, mammography and flu vaccination rates of Medicare beneficiaries are all areas of concern in Johnston County. All health factors variables are presented in Table 8 along with Johnston County specific data, the U.S. average, and the state average. The yellow highlighted categories are the areas identified by the County Health Rankings and Roadmaps as areas to explore (generally where Johnston County ranks very poorly compared to the national benchmark). The green highlighted areas are identified by County Health Rankings and Roadmaps as areas of strength for Johnston County.

**Table 8. Health Factors**

Category (Rank)	Johnston County	Error Margin	Oklahoma	United States
<b>Health Behaviors</b>				
Adult Smoking	23%	19-28%	18%	15%
Adult Obesity	42%	34-51%	40%	34%
Food Environment Index	5.8		5.6	7.7
Physical Inactivity	33%	27-38%	27%	23%
Access to Exercise Opportunities	41%		71%	84%
Excessive Drinking	13%	10-17%	14%	18%
Alcohol-Impaired Driving Deaths	35%	24-46%	27%	26%
Sexually Transmitted Infections	282		520	496
Teen Births	29	23-36	27	17
<b>Clinical Care</b>				
Uninsured	19%	17-21%	17%	10%
Primary Care Physicians	3,430:1		1,690:1	1,330:1
Dentists	1,160:1		1,560:1	1,360:1
Mental Health Providers	110:1		230:1	320:1
Preventable Hospital Stays	4,452		3,069	2,681
Mammography Screening	27%		40%	43%
Flu Vaccinations	31%		42%	46%
<b>Social &amp; Economic Factors</b>				
High School Graduation	88%	86-90%	89%	89%
Some College	50%	43-58%	60%	68%
Unemployment	3.7%		3.0%	3.7%
Children in Poverty	27%	18-36%	20%	16%
Income Inequality	4.8	3.9-5.1	4.6	4.9
Children in Single-Parent Household	26%	20-32%	26%	25%
Social Associations	13.6		11.3	9.1
Injury Deaths	172	138-210	98	80
<b>Physical Environment</b>				
Air-Pollution- Particulate Matter	8.7		8.7	7.4
Drinking Water Violations	Yes			
Severe Housing Problems	13%	10-16%	13%	17%
Driving Alone to Work	78%	74-82%	80%	72%
Long Commute- Driving Alone	40%	34-46%	28%	36%

Source: County Health Rankings & Roadmaps; University of Wisconsin Population Health Institute; Robert Wood Johnson Foundation

The following figure depicts each county’s rank by shade. Johnston County’s overall health factors ranking is more favorable than Coal and Atoka Counties, and it is less favorable than Pontotoc and Carter Counties and comparable to Murray, Marshall and Bryan Counties.



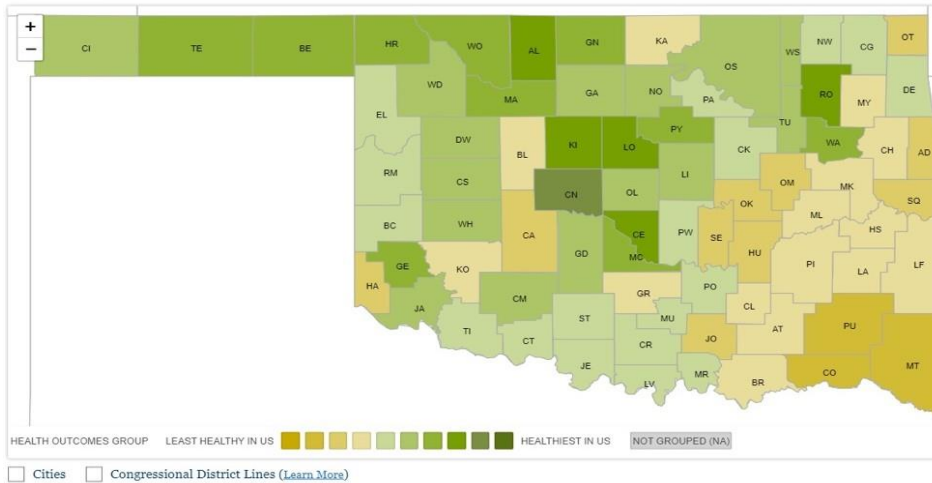
Health outcomes are comprised of two areas: length of life and quality of life. Johnston County lags the state and national average in most variable with the exception of low birthweight. The variables for each of these sections are presented in Table 9.

**Table 9. Health Outcomes**

Category (Rank)	Johnston County	Error Margin	Oklahoma	United States
<b>Length of Life</b>				
Premature Death	13,400	10,900-15,900	10,300	8,000
<b>Quality of Life</b>				
Poor or Fair Health	22%	19-26%	19%	14%
Poor Physical Health Days	4.5	3.6-5.6	3.8	3.3
Poor Mental Health Days	6.0	4.9-7.3	5.5	4.8
Low Birth Weight	10%	8-12%	8%	8%

Source: County Health Rankings & Roadmaps; University of Wisconsin Population Health Institute; Robert Wood Johnson Foundation

The following figure shows county health outcomes rankings by shades. Johnston County’s ranking is less favorable than all surrounding counties.



### Community Survey Methodology and Results

A survey was designed to gauge hospital usage, satisfaction, and community health needs. The survey was available in both paper and web format. Mercy Hospital Tishomingo, the Family Health Center of Southern Oklahoma, and Johnston County Health Department worked collaboratively to distribute the survey throughout the community. Fliers for the survey with the QR code were shared at Mannsville City Hall, Mannsville Agricultural Center, Bill’s Café, Bamzee’s Fuel, the Mannsville Post Office, Mannsville Public Schools, Coleman Public Schools, Mill Creek Public Schools, Milburn Public Schools, a local gas station in Milburn, Milburn City Hall, Coleman General Store, Senior Centers in Reagan and Mill Creek, Regan Jubilee, Ravia City Hall, and Bromide City Clerk’s office. When available, these entities also shared the survey link through their social media platforms. A copy of the survey form and results can be found in Appendix D. Surveys were also made available during onsite events hosted by the county health department. All three entities shared the survey through their social media and had hard copy surveys available.

The survey ran from February 8 through April 19, 2024. A total of 173 surveys from the Johnston County area were completed. Of the surveys returned, 148 were electronic surveys completed via Survey Monkey.

Table 10 below shows the survey respondent representation by zip code. The largest share of respondents was from the Tishomingo (73460) zip code with 51 responses or 29.5 percent of the total. Coleman followed with 17 responses, and Wapanucka had 15 responses.

**Table 10. Zip Code of Residence**

Response Category	No.	%
<b>73460- Tishomingo</b>	51	29.5%
<b>73432- Coleman</b>	17	9.8%
<b>73461- Wapanucka</b>	15	8.7%
<b>73455- Ravia</b>	11	6.4%
<b>73450- Milburn</b>	9	5.2%
<b>74856- Mill Creek</b>	6	3.5%
74525- Atoka	6	3.5%
73401- Ardmore	4	2.3%
<b>73447- Mannsville</b>	4	2.3%
74533- Caney	3	1.7%
74530- Bromide	3	1.7%
73446- Madill	2	1.2%
74820- Ada	2	1.2%
73439- Hodgen	2	1.2%
74748- Kenefic	1	0.6%
74871- Stonewall	1	0.6%
75469- Stringtown	1	0.6%
74842- Fittstown	1	0.6%
74836- Connerville	1	0.6%
74735- Fort Towson	1	0.6%
74701- Durant	1	0.6%
74538- Coalgate	1	0.6%
73086- Sulphur	1	0.6%
No response	29	16.8%
<b>Total</b>	<b>173</b>	<b>100.0%</b>

*\*Denotes zip codes within Johnston County*

The survey focused on several health topics of interest to the community. Highlights of the results include:

***Primary Care Access***

- Only 42 respondents or 24.3% of the survey respondents believe there are enough primary care physicians practicing in the Tishomingo area
- 59% responded they were able to get an appointment with their primary care physician when they needed one, within 48 hours

- 59% of individuals who responded to the survey indicated that if a facility or providers offered discounted services based on income, that would make healthcare more accessible
- In terms of willingness to travel for primary care services, 15% of respondents would travel 1-10 miles; 20.2% of respondents would travel 11-25 miles; 26.6% of respondents indicated they would be willing to travel 26-50 miles; and 38.2% of respondents indicated they would travel a distance of greater than 50 miles for primary care services.

***Specialist Visits***

Summary highlights include:

- 64.2% of all respondents report some specialist visit in past 24 months
- Most common specialty visited are displayed in Table 11
- One specialist visit occurred in Tishomingo

**Table 11. Type of Specialist Visits**

Type of Specialist	No.	Percent
<b><i>Top 5 Responses</i></b>		
Cardiologist <i>(1 visit in Tishomingo)</i>	30	15.6%
Orthopedist/Ortho Surg. <i>(0 visits in Tishomingo)</i>	22	11.5%
OB/GYN <i>(0 visits in Tishomingo)</i>	16	8.3%
Gastroenterologist <i>(0 visits in Tishomingo)</i>	12	6.3%
Neurologist/Neurosurg. <i>(0 visits in Tishomingo)</i>	12	6.3%
All others <i>(0 visits in Tishomingo)</i>	<u>100</u>	<u>52.1%</u>
<b>Total</b>	<u>192</u>	<u>100.0%</u>

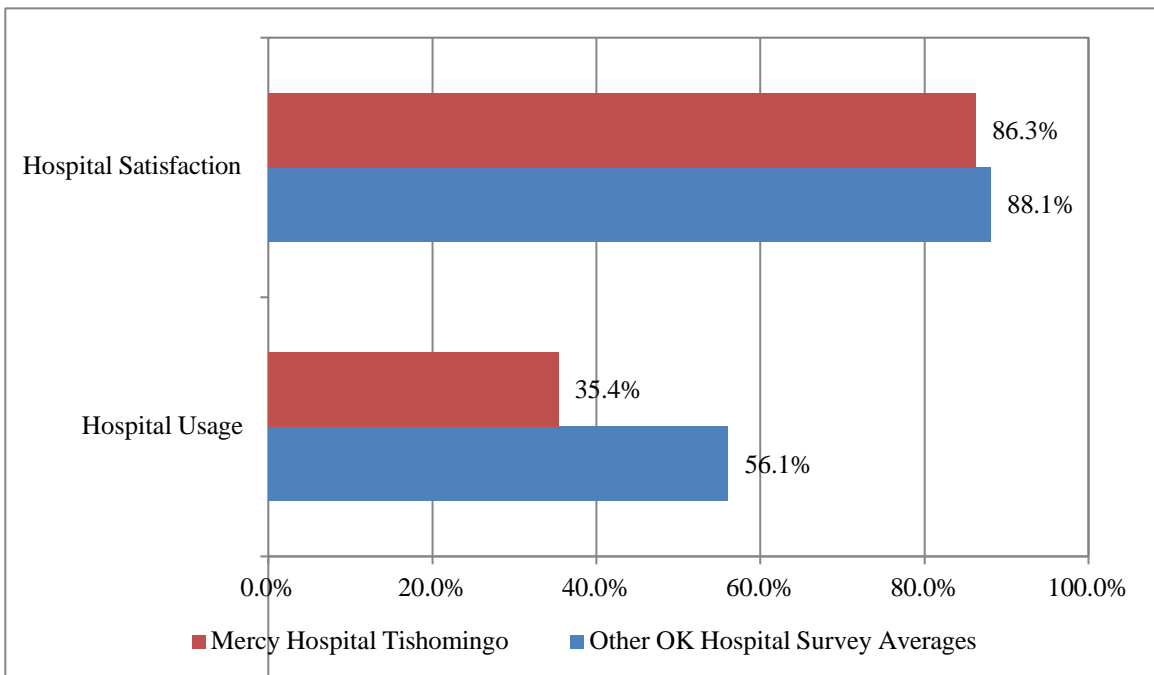
Some respondents answered more than once.

## *Hospital Usage and Satisfaction*

Survey highlights include:

- 35.4% of survey respondents that have used hospital services in the past 24 months used services at Mercy Hospital Tishomingo
  - o AllianceHealth Durant (17%) and Mercy Hospital Ardmore (11.6%) followed
  - o The most common response for using a hospital other than Mercy Hospital Tishomingo was availability of specialty care (including surgery) (31.8%) and closer, more convenient location (19.6%)
  - o The usage rate of 35.48% was lower than the state average of 56.1% for usage of other rural Oklahoma hospitals surveyed
- 86.3% of survey respondents were satisfied with the services received at Mercy Hospital Tishomingo
  - o This is slightly below the state average for other hospitals (88.1%)
- Most common services used at Mercy Hospital Tishomingo:
  - o Emergency Room (36.8%)
  - o Diagnostic Imaging (X-ray, CT, Ultrasound) (25.5%)
  - o Laboratory (20.8%)

**Figure 2. Summary of Hospital Usage and Satisfaction Rates**



### *Local Healthcare Concerns and Additional Services*

Survey respondents were asked what they believe are the biggest health concerns in Johnston County. The most common response was substance abuse (16.1%, or 66.5% of all survey respondents selected this item) followed by poverty (10.9% or 45.1% of all survey respondents selected this item) and mental health problems (10.8% or 44.5% of all survey respondents selected this item). Table 12 displays all responses and the frequencies.

**Table 12. What do you think are the biggest health problems in Johnston County?**

Response Category	No.	%	% of Respondents
Substance abuse	115	16.1%	66.5%
Poverty	78	10.9%	45.1%
Mental health problems	77	10.8%	44.5%
Obesity	61	8.5%	35.3%
Child abuse/Neglect	44	6.1%	25.4%
Diabetes	44	6.1%	25.4%
High blood pressure	43	6.0%	24.9%
Aging problems (arthritis, hearing loss, etc.)	39	5.4%	22.5%
Heart disease and stroke	32	4.5%	18.5%
Dental problems	32	4.5%	18.5%
Domestic violence	31	4.3%	17.9%
Respiration/Lung disease	18	2.5%	10.4%
Motor vehicle crash injuries	16	2.2%	9.2%
Sexually transmitted diseases/Infections (STI/STD)	16	2.2%	9.2%
Suicide	9	1.3%	5.2%
Firearm-related injuries	6	0.8%	3.5%
Homicide	5	0.7%	2.9%
Rape/Sexual assault	3	0.4%	1.7%
Infant deaths	3	0.4%	1.7%
<i>Lack of mental health services/resources</i>	3	0.4%	1.7%
Infectious diseases (hepatitis, TB)	2	0.3%	1.2%
HIV/AIDS	1	0.1%	0.6%
<i>Animal neglect</i>	1	0.1%	0.6%
<i>Lack of activities for children and young adults</i>	1	0.1%	0.6%
<i>Family life/Family structure</i>	1	0.1%	0.6%
<i>Crime</i>	1	0.1%	0.6%
No response/Don't know	34	4.7%	19.7%
<b>Total*</b>	<b>716</b>	<b>100.0%</b>	

\*Some respondents answered more than once; % Respondents indicates the percentage of respondents that identified each response.

\*\*Italicized responses were provided as "other"

Survey respondents also had the opportunity to identify what additional health and wellness services they would like to see offered in their community. The most common response was specialists with a collective response of 7.3 percent. Vision and optometry services tied also with 14 responses or 7.3 percent of the total. Table 13 displays the full listing of responses.

**Table 13. What additional health and wellness services would you like to see offered in Johnston County?**

Response Category	No.	%
Specialists: Pediatrician (6); Specialists in general (2); Urologist (2); OB/GYN (2); Internal Medicine (1); Pulmonologist (1)	14	7.3%
Vision/Optomety	14	7.3%
Urgent care	11	5.7%
Dental/Lower cost dental/Pediatric dental	9	4.7%
Don't know/No additional services	5	2.6%
Mammogram	4	2.1%
More primary care/Greater access to care	4	2.1%
Imaging available at Mercy Hospital Tishomingo: CT (2); MRI (1), Diagnostic lab (1)	4	2.1%
Gym/Exercise machines	3	1.6%
Improved quality of care	3	1.6%
Outpatient rehab/therapy	2	1.0%
Geriatric services/Senior activities/Geriatric provider	2	1.0%
Mental health services	2	1.0%
Student health/Free urgent care for students	2	1.0%
Surgery	2	1.0%
Nutrition education/Counseling	2	1.0%
Women's health services for patients who don't have insurance	1	0.5%
Wellness checks/Routine Preventative care	1	0.5%
Virtual visits	1	0.5%
Free health resources for Johnston County	1	0.5%
More options for care	1	0.5%
Locations in Coleman/Distance to services	1	0.5%
Prosthetics	1	0.5%
No response	102	53.1%
<b>Total</b>	<b>192</b>	<b>100.0%</b>

\*Some respondents answered more than once. Average responses equal 1.11

## Community Health Needs- Identification of Priorities

To gather community input, a single community meeting was held. The in-person community meeting was held on October 29, 2024, at INCA Community Action Agency. A complete listing of individuals who participated is included in Appendix B.

During the community meeting process, participants were asked the following three questions:

- What are the top health needs of the patients/clients I serve?
- What are the top health needs of the greater community (outside of the hospital or clinic setting)?
- What am I most proud of in Johnston County?

### The concerns listed were:

- Affordability of care (2)
- Lack of senior activities
- Lack of childcare options
  - There is a financial strain on childcare providers, and they might not be able to take on more kids
- Access to physical activity (2)
  - Walking groups
  - 24-hour gym
    - The Gym on W Main
  - Spaces/opportunities for activity
  - Walking, bicycling trails
    - Parks and Rec is working on pickle ball court
  - Summer activities to keep kids active
- Transportation
  - More difficult for those without Medicare/Medicaid
- Optometry
- Specialists and Accessing specialists (2)
  - OB/GYN, available locally
  - Orthopedics
  - Psychiatry
    - Pediatric psych
    - Behavioral health needs (2) including children- a noted increase in anxiety within the pediatric population
    - Drug Rehab support
- Urgent Care (4)
  - Hard to get in to see providers, going by EMS is quicker option
- Patient education
  - Education about medications and home safety
  - Diabetes education
  - Chronic care management/wound care (2)
- Improved communication of available resources in community
  - Health promotion among community/kids
  - More collaboration in community for resources and what is available in community

- Housing needs
- Many grandparents raising grandchildren
  - Generational gaps, technology gaps
- There is a spike noted on teenage pregnancy (younger than 17)
  - Providing sex ed to students- accessing those students outside of the schools

**Johnston County does have many strengths. Some of the sources of pride noted by community members include:**

- Passionate about community/prideful community
- Participation in community/show up to events (3)
- Ability to rally together and support one another
- 340B pharmacy in community
- Shared interest and investment in community improvement
- Close knit, tight community
- Heritage, a lot of history in Johnston County
- Chickasaw Nation does a great job
- Gateway city- many resources available
- Stride along- morning walk on the nature trail, coffee available, November 12 @ 8:30
- A lot of programs available in community and through development group- not always present in similar counties
- Sense of community
- Community involvement
- Community healthcare effort present in community- health dept., hospital, and clinic
- Murray State is a great asset
- Pride of Blue River, walking trails

**Health Priorities Identified**

Mercy Hospital Tishomingo Administration utilized these responses to generate the list of priorities based on the frequencies of responses, potential impact the hospital can have on these items, and the opportunity to collaborate with existing organizations and providers in the community. The following items were identified as priorities:

- Access to Care

- Food Insecurity
- Health Promotion

The hospital does understand the importance of the health concerns in the community. Some are beyond the scope of services the hospital can provide, but the hospital can support these issues through collaborative efforts in the community: Childcare, Physical Activities, and Housing.

### **Community Health Needs Assessment Marketing Plan**

The hospital will make the Community Health Needs Assessment Summary available upon request at Mercy Hospital Tishomingo, and a copy will be available to be downloaded from the hospital's website (<https://www.mercy.net/about/our-communities/community-benefits/>).

## **Appendix A- Hospital Services/Community Benefits**

### **Mercy Hospital Tishomingo Hospital Services and Community Benefits**

#### Inpatient Services

Acute Beds  
Swing Beds  
Laboratory  
Health Information Management - Electronic Health Record  
Physical Therapy  
Speech Therapy  
Occupational Therapy  
Respiratory therapy  
Radiology – X-ray, CT, Ultrasound, ECHO  
Drug Room  
Dietician  
Specialist Referral

#### Outpatient Services

Emergency Department  
Infusion Services  
Laboratory  
Radiology—Ultrasound, X-ray, CT, ECHO  
Bilingual Services  
Respiratory Therapy  
Pulmonary Rehab  
Pulmonary Function Testing

#### Community Activities

Johnston County Chamber of Commerce  
Tishomingo Development Team  
Charitable Care for Uninsured  
United Way of South-Central Oklahoma  
Partner of Johnston County 911  
Partner of Johnston County EMS  
Sooner Care/Medicaid Enroller  
Chickasaw Festival Parade  
Southern Oklahoma Workforce Board  
Johnston County Healthcare Center for Workforce Excellence Member  
Partner with Family Health Center of Southern OK for Women's Health Fair  
Partner with Regional Food Bank  
Johnston County EMS Angel Tree

#### Accreditation

Certified by Medicare/Medicaid as Critical Access Hospital.  
CLIA

## Hospital Advisory Board 2024

John Mohart, MD, Chair

Jeffrey Ciaramita, MD

Shelley Gilbert, RN, DON

Paige Dove, RN

Michele Lively, RT

Lori McMillin, PT, Hospital Administrator

The hospital opened in 1960 and has been operated by Mercy Health since 2011.

All 25 beds of Mercy Hospital Tishomingo are acute care and can be used as “swing” beds. Acute care means the patient is a bed patient in the hospital because of a serious illness or injury that require frequent monitoring by medical professionals but is expected to be temporary. Under terms of our licensure, we must have no more than an average of 96 hours length of stay at the end of the fiscal year. Patients with more severe illnesses that require longer than 96 hours may need to be transferred to a larger PPS hospital for care. After 3 midnights, skilled nursing (swing bed) is provided by registered nurses or licensed practical nurses for a patient whose condition does not rise to the level of “acute care” but still needs 24-hour medical or nursing care or rehabilitative services. Swing bed stays may extend beyond 96 hours. A swing bed nursing patient generally is receiving care directly after an acute care stay but as long as they have a qualifying 3 day stay and meet criteria, may come any time within 30 days after discharge from an acute setting.

## Appendix B Community Input Participants

### Johnston County Community Health Needs Assessment Community Input Session

29-Oct-24

<b>Name</b>	<b>Organization</b>
Jason Vanet	Family Health Center of Southern Oklahoma
Carla Ballew	Family Health Center of Southern Oklahoma
Katie Falconer	Family Health Center of Southern Oklahoma
Tina Jaramillo	Family Health Center of Southern Oklahoma
McKenna Killingsworth	Family Health Center of Southern Oklahoma
Savannah McGuire	Family Health Center of Southern Oklahoma
Tom Lokey	Johnston County Sentinel
Amanda Lewis	OSU Extension
Rhonda Skeleton	Chickasaw Nation
Pinky Mayo	INCA
Crystal Burnezky-Robertson	OSU Extension
JP Johnson	Murray State College
Amy Gamble	Family Health Center of Southern Oklahoma
Kenneth Power	Johnston County EMS
Scott Kirby	Johnston County EMS
Cindy Matheny	Mercy Hospital Board
Allycia Ellis	Victory Home Health
Dana Young	Victory Home Health
Wanda Kelly	Family Health Center of Southern Oklahoma
Kaycee Young	Mercy Ada
Kara Alexander	Mercy Community Health
Tia Moore	Mercy Hospital Tishomingo
Shelley Gilbert	Mercy Hospital Tishomingo
Jessica Pickons	Family Health Center of Southern Oklahoma
Ashely Rogers	Family Health Center of Southern Oklahoma
Jackson Seeberger	OK State. Dept. of Health
Becky Roe	OK State. Dept. of Health
Sheila Lawson	OK State. Dept. of Health
Billie Jo Clouse	Johnston County Health Department
Wanda Gray	INCA
Katelyn Hearrey Pate	Family Health Center of Southern Oklahoma
Kathy Gooding	OK Complete Health
Lori McMillin	Mercy Hospital Tishomingo

# Appendix C Economic Impact Summary

## Mercy Hospital Tishomingo

### Economic Impact



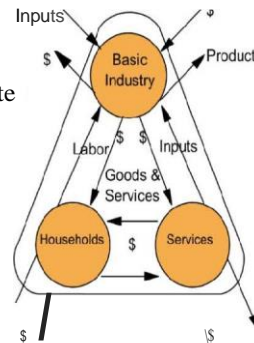
**Healthcare, especially a hospital, plays a vital role in local economies.**

Mercy Hospital Tishomingo **directly** employs 69 individuals with an annual payroll of over **\$7.4 million** including benefits

- These employees and income create an additional 27 jobs and nearly \$1.2 million in income as they interact with other sectors of the local economy
- **Total impacts= 96 jobs and over \$8.6 million**
- Other segments of the healthcare sector (Pharmacies, nursing homes, etc.) provide another 413 **jobs** and an additional **\$25.5 million** in wages
- Their interactions and transactions within the local economy including the hospital's impact create:
  - **Total health sector impacts= 602 jobs and \$36.7 million**
  - Over **\$6.7 million** in retail sales generated from the presence of the health sector

#### Healthcare and Your Local Economy:

- Attracts retirees and families
- Appeals to businesses looking to establish and/or relocate
- High-quality healthcare services and infrastructure foster community development
  - Positive impact on retail sales of local economy



Source: Doeksen, G.A., T. Johnson, and C. Willoughby. 1997. Measuring the Economic Importance of the Health Sector on a Local Economy: A Brief Literature Review and Procedures to Measure Local Impacts

#### Consider what could be lost without the hospital:

- Pharmacies
- Other Healthcare Providers and Services
- Physicians/Specialists
- Potential Retail Sales

For additional information, please contact:

Lara Brooks, Rural Health Analyst, [lara.brooks@okstate.edu](mailto:lara.brooks@okstate.edu)  
Corie Kaiser, Director, [corie.kaiser@okstate.edu](mailto:corie.kaiser@okstate.edu)  
Oklahoma Office of Rural Health



CENTER FOR  
**RURAL HEALTH**  
OSU Center for Health Sciences

*Multipliers were derived from IMPLAN 2022, sales tax data were derived from County FY2022 Oklahoma Tax Commission data, and 2022 personal income estimates from Bureau of Economic Analysis.*

# Appendix D- Survey Form and Survey Results

## Johnston County Health Survey- 2024

Please return completed survey by **March 31, 2024** to the Johnston County Health Department, Mercy Hospital Tishomingo, or Family Health Center of Southern Oklahoma

This survey is a collaborative effort between Johnston County Health Department, Mercy Hospital Tishomingo, and the Family Health Center of Southern Oklahoma. The goal of this survey is to identify community healthcare needs and strategize ways to improve the health and overall quality of life of Johnston County residents.

Completion of this survey is voluntary, and all responses will be anonymous.

I. How healthy would you rate your community?

- Very Healthy                       Neutral                       Somewhat Unhealthy  
 Somewhat Healthy                       Very Unhealthy

2. How satisfied are you with the quality of life in Johnston County?

- Very Satisfied                       Neutral                       Somewhat Dissatisfied  
 Somewhat Satisfied                       Very Dissatisfied

3. Are you able to get medical care and medication when needed?

- |                           | Yes                      | No                       |
|---------------------------|--------------------------|--------------------------|
| General Medical Care      | <input type="checkbox"/> | <input type="checkbox"/> |
| Adult Specialist Care     | <input type="checkbox"/> | <input type="checkbox"/> |
| Teeth                     | <input type="checkbox"/> | <input type="checkbox"/> |
| Eyes                      | <input type="checkbox"/> | <input type="checkbox"/> |
| Health Department         | <input type="checkbox"/> | <input type="checkbox"/> |
| Emergency Hospital        | <input type="checkbox"/> | <input type="checkbox"/> |
| <b>Services</b>           |                          |                          |
| OB/GYN and Prenatal       | <input type="checkbox"/> | <input type="checkbox"/> |
| Pediatric General Care    | <input type="checkbox"/> | <input type="checkbox"/> |
| Pediatric Specialist Care | <input type="checkbox"/> | <input type="checkbox"/> |
| Mental Health Services    | <input type="checkbox"/> | <input type="checkbox"/> |
| Urgent Care               | <input type="checkbox"/> | <input type="checkbox"/> |
| Pharmacy/Medication       | <input type="checkbox"/> | <input type="checkbox"/> |

4. If a healthcare facility/provider were to offer discounted services based on income, would that make healthcare more accessible to you?

- Yes                       No                       Dontknow

5. How do you pay for your health care? Mark all that apply

- |  |   |
|--|---|
| <input type="checkbox"/> Cash (no insurance)           | <input type="checkbox"/> Medicaid                           |
| <input type="checkbox"/> Indian Health Services/Tribal | <input type="checkbox"/> IRICARE                            |
| <input type="checkbox"/> Medicare                      | <input type="checkbox"/> Private Health Insurance           |
| <input type="checkbox"/> Insure Oklahoma               | <input type="checkbox"/> Employer Provided Health Insurance |
| <input type="checkbox"/> Free Health Clinic            | <input type="checkbox"/> Insurance Marketplace              |
| <input type="checkbox"/> Veteran Administration        |   |

6. What types of transportation do you or people in your household use? (Select all that apply)

- |   |  |
|---|--|
| <input type="checkbox"/> Personal vehicle | <input type="checkbox"/> Public transportation (JAMM Bus, SORTS, SoonerRide) |
| <input type="checkbox"/> Walking          | <input type="checkbox"/> Rely on friends or family for rides                 |
| <input type="checkbox"/> Ride a bike      | <input type="checkbox"/> Other (Please list below)                           |

7. How far are you able to travel for healthcare services?

- |  |  |
|--|--|
| <b>Primary Care</b>                            | <b>Specialty Care</b>                          |
| <input type="checkbox"/> 1-10 miles            | <input type="checkbox"/> 1-10 miles            |
| <input type="checkbox"/> 11-25 miles           | <input type="checkbox"/> 11-25 miles           |
| <input type="checkbox"/> 26-50 miles           | <input type="checkbox"/> 26-50 miles           |
| <input type="checkbox"/> Greater than 50 miles | <input type="checkbox"/> Greater than 50 miles |

Continue on reverse side...



8. Has your household used the services of a hospital in the past 24 months?  
 Yes (*Go to Q9*)       No (*Skip to Q11*)       Don't know (*Skip to Q13*)
9. At which hospital(s) were services received? (*please check all that apply*)  
 **Mercy Hospital Tishomingo** (*Skip to Q11*)       Other (*Please specify Hospital and City, then go to Q10*)
- 
10. If you responded in Q9 that your household received care at a hospital other than **Mercy Hospital Tishomingo**, why did you or your family member choose that hospital? (*Please answer then skip to Q13*)
- |   |   |
|---|---|
| <input type="checkbox"/> Physician referral               | <input type="checkbox"/> Quality of care/Lack of confidence |
| <input type="checkbox"/> Closer, more convenient location | <input type="checkbox"/> Availability of specialty care     |
| <input type="checkbox"/> Insurance reasons                | <input type="checkbox"/> Other ( <i>Please list below</i> ) |
- 

If you responded in Q9 that your household received care at **Mercy Hospital Tishomingo**, what hospital service(s) were used?

- II.
- |  |   |
|--|---|
| <input type="checkbox"/> Diagnostic imaging (X-ray, CT, Ultrasound)          | <input type="checkbox"/> Hospital Inpatient                 |
| <input type="checkbox"/> Laboratory  | <input type="checkbox"/> Skilled nursing (swing bed)        |
| <input type="checkbox"/> Outpatient Services (including imaging and testing) | <input type="checkbox"/> Emergency room (ER)                |
| <input type="checkbox"/> Respiratory Therapy/Pulmonary Function Test         | <input type="checkbox"/> Other ( <i>Please list below</i> ) |
- 

12. How satisfied was your household with the services you received at **Mercy Hospital Tishomingo**?  
 Satisfied       Dissatisfied       Don't know
13. Has your household utilized the services at **Family Health Center of Southern Oklahoma** in the past 24 months?  
 Yes (*Go to Q14*)       No (*Skip to Q16*)       Don't know (*Skip to Q16*)
14. If you responded in Q13 that your household received care at **Family Health Center of Southern Oklahoma**, what service(s) were used?
- |   |   |
|---|---|
| <input type="checkbox"/> Physicals                            | <input type="checkbox"/> Behavioral health                                |
| <input type="checkbox"/> Preventative Care                    | <input type="checkbox"/> Diagnostic imaging (X-ray, Ultrasound, Dexascan) |
| <input type="checkbox"/> Acute care (illness, injuries, etc.) | <input type="checkbox"/> Laboratory                                       |
| <input type="checkbox"/> Pulmonary function test              | <input type="checkbox"/> Referral to specialist                           |
| <input type="checkbox"/> Holter monitor placement             | <input type="checkbox"/> Other ( <i>Please list below</i> )               |
| <input type="checkbox"/> Dental                               |   |
- 

15. How satisfied was your household with the quality of care received at **Family Health Center of Southern Oklahoma**?  
 Satisfied       Dissatisfied       Don't know
16. Do you think there are enough primary care (family) providers practicing in Johnston County?  
 Yes       No       Don't know
17. Are you able to get an appointment, within 48 hours, with your primary care provider when you need one?  
 Yes       No       Don't know
18. Has your household been to a specialist in the past 24 months?  
 Yes       No (*Skip to Q22*)       Don't know (*Skip to Q22*)

19. What type of specialist has your household been to in the past 24 months and in which city were they located?

Type "....."	City
_____	_____
_____	_____

---

20. Did the specialist request further testing, laboratory work and/or x-rays?  
 Yes       No       Don't know
21. If yes, in which city were the tests or laboratory work performed?
-



22. What additional health and wellness seVices or procedmes would you like to see offered in Johnston County?

---



---

23. In yom opinion, which of the following would make it easier for you to access healthcare seVices? (Select all that apply)

- |   |   |
|---|---|
| <input type="checkbox"/> Lowering the cost  | <input type="checkbox"/> Mobile ClinicUnittovisitmy community regularly                                 |
| <input type="checkbox"/> Increasing the number of providers who are covered by your insurance | <input type="checkbox"/> Knowing I will be treated with respect and included in my healthcare decisions |
| <input type="checkbox"/> Reducing wait times to get in to see providers                       | <input type="checkbox"/> Increasing the number of providers who are covered by your insurance           |
| <input type="checkbox"/> Providing transportation services                                    | <input type="checkbox"/> I do not have difficulty accessing healthcare services                         |

24\_ Mark yom level of agreement with the following statements as they apply in Johnston County.

	<b>Strongly Agree</b>	<b>Agree</b>	<b>Neutral</b>	<b>Disagree</b>	<b>Strongly Disagree</b>
There are jobs available in the community	<input type="checkbox"/>	<input type="checkbox"/>	<input type="checkbox"/>	<input type="checkbox"/>	<input type="checkbox"/>
There are opportunities for advancement	<input type="checkbox"/>	<input type="checkbox"/>	<input type="checkbox"/>	<input type="checkbox"/>	<input type="checkbox"/>
The community is a safe place to live	<input type="checkbox"/>	<input type="checkbox"/>	<input type="checkbox"/>	<input type="checkbox"/>	<input type="checkbox"/>
Neighbors know, trust, and look out for one another	<input type="checkbox"/>	<input type="checkbox"/>	<input type="checkbox"/>	<input type="checkbox"/>	<input type="checkbox"/>
There are support networks for individuals and families (For example, chmch or family readiness group.)	<input type="checkbox"/>	<input type="checkbox"/>	<input type="checkbox"/>	<input type="checkbox"/>	<input type="checkbox"/>

25\_ Mark yom level of agreement with the following statements as they apply in Johnston County.

	<b>Strongly Agree</b>	<b>Agree</b>	<b>Neutral</b>	<b>Disagree</b>	<b>Strongly Disagree</b>
Community is a good place to raise children	<input type="checkbox"/>	<input type="checkbox"/>	<input type="checkbox"/>	<input type="checkbox"/>	<input type="checkbox"/>
There are opportunities for children to be octive	<input type="checkbox"/>	<input type="checkbox"/>	<input type="checkbox"/>	<input type="checkbox"/>	<input type="checkbox"/>
There is access to safe and affordable child care	<input type="checkbox"/>	<input type="checkbox"/>	<input type="checkbox"/>	<input type="checkbox"/>	<input type="checkbox"/>
I aru satisfied with the school system	<input type="checkbox"/>	<input type="checkbox"/>	<input type="checkbox"/>	<input type="checkbox"/>	<input type="checkbox"/>
There are networks to support parents	<input type="checkbox"/>	<input type="checkbox"/>	<input type="checkbox"/>	<input type="checkbox"/>	<input type="checkbox"/>
This is a community to grow old in	<input type="checkbox"/>	<input type="checkbox"/>	<input type="checkbox"/>	<input type="checkbox"/>	<input type="checkbox"/>
There are opportunities for older adults to be rutive	<input type="checkbox"/>	<input type="checkbox"/>	<input type="checkbox"/>	<input type="checkbox"/>	<input type="checkbox"/>
There are services for older adults	<input type="checkbox"/>	<input type="checkbox"/>	<input type="checkbox"/>	<input type="checkbox"/>	<input type="checkbox"/>
There are networks of support for the elderly living alone	<input type="checkbox"/>	<input type="checkbox"/>	<input type="checkbox"/>	<input type="checkbox"/>	<input type="checkbox"/>

26. What items cause you the most stress? (Please mark all that apply)

- |  |   |
|--|---|
| <input type="checkbox"/> Money/Finances                                    | <input type="checkbox"/> School                             |
| <input type="checkbox"/> Work/Job  | <input type="checkbox"/> Discrimination                     |
| <input type="checkbox"/> Family Responsibilities                           | <input type="checkbox"/> Poor or Unstable Housing           |
| <input type="checkbox"/> Mental or Physical Health Conditions              | <input type="checkbox"/> Substance Abuse                    |
| <input type="checkbox"/> Parenting/Children                                | <input type="checkbox"/> Lock of Transportation             |
| <input type="checkbox"/> Major Life Event                                  | <input type="checkbox"/> Abuse                              |
| <input type="checkbox"/> Relationship Difficulties (Friends, Spouse, etc.) | <input type="checkbox"/> Lock of Safety/Crime               |
| <input type="checkbox"/> Unemployment                                      | <input type="checkbox"/> Other ( <i>Please list Uelow</i> ) |

---

*Continue on reverse side...*

27. What are the most common ways you manage your stress? (Please mark all that apply)
- |   |   |
|---|---|
| <input type="checkbox"/> Exercise, walk or go for a bike ride | <input type="checkbox"/> Drink alcohol                          |
| <input type="checkbox"/> Spend time with family or friends    | <input type="checkbox"/> Go for a drive                         |
| <input type="checkbox"/> Read                                 | <input type="checkbox"/> Play a video game or surf the internet |
| <input type="checkbox"/> Watch television or movies           | <input type="checkbox"/> Get a massage or spa treatment         |
| <input type="checkbox"/> Listen to music                      | <input type="checkbox"/> Nothing                                |
| <input type="checkbox"/> Clean or do chores                   | <input type="checkbox"/> Shop                                   |
| <input type="checkbox"/> Spend time doing a hobby             | <input type="checkbox"/> Play sports                            |
| <input type="checkbox"/> Pray or go to church                 | <input type="checkbox"/> SmokeNape/Dip/Chew                     |
| <input type="checkbox"/> Eat                                  | <input type="checkbox"/> See a mental health professional       |
| <input type="checkbox"/> Nap                                  | <input type="checkbox"/> Gamble                                 |
| <input type="checkbox"/> Meditation                           | <input type="checkbox"/> Other (Please list bdmv)               |
- 

28. What do you think are the biggest health problems in Johnston County? (Please mark all that apply)
- |   |   |
|---|---|
| <input type="checkbox"/> Substance abuse                                | <input type="checkbox"/> Sexually transmitted diseases/infections (STI/STD) |
| <input type="checkbox"/> Aging problems (arthritis, hearing loss, etc.) | <input type="checkbox"/> Motor vehicle crash injuries                       |
| <input type="checkbox"/> Mental health problems                         | <input type="checkbox"/> Respiration/Lung disease                           |
| <input type="checkbox"/> Poverty  | <input type="checkbox"/> Rape/Sexual assmut                                 |
| <input type="checkbox"/> Heart disease and stroke                       | <input type="checkbox"/> Infectious diseases (hepatitis, TB)                |
| <input type="checkbox"/> Cancers  | <input type="checkbox"/> Suicide  |
| <input type="checkbox"/> Domestic violence                              | <input type="checkbox"/> Homicide   |
| <input type="checkbox"/> Child abuse/Neglect                            | <input type="checkbox"/> Firearm-Related injuries                           |
| <input type="checkbox"/> Diabetes                                       | <input type="checkbox"/> Infant death                                       |
| <input type="checkbox"/> High blood pressure                            | <input type="checkbox"/> HIV/AIDS   |
| <input type="checkbox"/> Dental problems                                | <input type="checkbox"/> Obesity  |
| <input type="checkbox"/> Teenage pregnancy                              | <input type="checkbox"/> Other (Please list below)                          |
- 

29. What do you think are the most important factors for a quality of life in a "Healthy Community"? (Please mark all that apply)
- |   |  |
|---|--|
| <input type="checkbox"/> Good jobs and healthy economy            | <input type="checkbox"/> Religious or spiritual values             |
| <input type="checkbox"/> Access to healthcare (ex. Family doctor) | <input type="checkbox"/> Parks and recreation                      |
| <input type="checkbox"/> Healthy behaviors and lifestyles         | <input type="checkbox"/> Arts and cultural events                  |
| <input type="checkbox"/> Affordable, safe housing                 | <input type="checkbox"/> Low adult death and disease rates         |
| <input type="checkbox"/> Strong family life                       | <input type="checkbox"/> Racial justice and equity                 |
| <input type="checkbox"/> Financial stability                      | <input type="checkbox"/> Access to safe, affordable transportation |
| <input type="checkbox"/> Low crime/safe neighborhoods             | <input type="checkbox"/> Low levels of child abuse                 |
| <input type="checkbox"/> Good schools                             | <input type="checkbox"/> Low infant deaths                         |
| <input type="checkbox"/> Good place to raise children             | <input type="checkbox"/> Other (Please list below)                 |
| <input type="checkbox"/> Clean environment                        |  |
- 

30. Where do you shop for food or groceries? (Select all that apply)
- |   |  |
|---|--|
| <input type="checkbox"/> Grocery store      | <input type="checkbox"/> Health food store               |
| <input type="checkbox"/> Church/Food pantry | <input type="checkbox"/> Farmers market                  |
| <input type="checkbox"/> Community Market   | <input type="checkbox"/> I/ We eat out                   |
| <input type="checkbox"/> Dollar store       | <input type="checkbox"/> Convenience store / Gas station |
|   | <input type="checkbox"/> Other (Please list below)       |
- 

Continue on rea'trse side...

31. Which of the following, if any, do you think would help you and your household eat more fruits and vegetables? (Select all that apply)

- |  |   |
|--|---|
| <input type="checkbox"/> Finding fruits and vegetables I enjoy eating.                     | <input type="checkbox"/> Having reliable transportation to the store to buy them. |
| <input type="checkbox"/> Knowing how to prepare them.                                      | <input type="checkbox"/> Having a grocery store closer to where I live.           |
| <input type="checkbox"/> Having more time in my schedule to prepare them.                  | <input type="checkbox"/> Having a better selection of them at my grocery store.   |
| <input type="checkbox"/> If I could buy more of them with EBT/IFoodshare or SNAP benefits. | <input type="checkbox"/> Other (Please list below)                                |
- 

32. Do you have access to high speed internet?

- |                              |                             |                                     |
|------------------------------|-----------------------------|-------------------------------------|
| <input type="checkbox"/> Yes | <input type="checkbox"/> No | <input type="checkbox"/> Don't know |
|------------------------------|-----------------------------|-------------------------------------|

33. What is the main reason you do not have internet access? (Select all that apply)

- |  |  |
|--|--|
| <input type="checkbox"/> I do not have electronic devices to join the internet at home | <input type="checkbox"/> I do not need it          |
| <input type="checkbox"/> Internet service is not available                             | <input type="checkbox"/> I do not want it          |
| <input type="checkbox"/> Cost is too expensive   | <input type="checkbox"/> Other (Please list below) |
| <input type="checkbox"/> I do not know how to use it                                   |  |
- 

34. What is your zip code? \_\_\_\_\_

35. What ethnic group do you most identify with?

- |   |   |
|---|---|
| <input type="checkbox"/> African American/Black | <input type="checkbox"/> Hispanic/Latino                |
| <input type="checkbox"/> White/Caucasian        | <input type="checkbox"/> American Indian/Alaskan Native |
| <input type="checkbox"/> Asian/Pacific Islander | <input type="checkbox"/> Other (Please list below)      |
- 

36. How would you describe your current financial situation? (Select all that apply)

- |  |
|--|
| <input type="checkbox"/> I don't have enough money to pay the bills to meet household needs. |
| <input type="checkbox"/> Money is a major stressor in my life.                               |
| <input type="checkbox"/> I live paycheck to paycheck.  |
| <input type="checkbox"/> I am financially secure   |

37. What is the highest level of school that you have completed?

- |   |  |
|---|--|
| <input type="checkbox"/> Primary school                   | <input type="checkbox"/> 2-year college degree |
| <input type="checkbox"/> Some high school, but no diploma | <input type="checkbox"/> 4-year college degree |
| <input type="checkbox"/> High school diploma (or GED)     | <input type="checkbox"/> Graduate-level degree |
| <input type="checkbox"/> Some college, but no degree      | <input type="checkbox"/> None of the above     |

38. How would you prefer to be notified of community events?

- (Please select all that apply)
- |                                    |                                  |                                       |
|------------------------------------|----------------------------------|---------------------------------------|
| <input type="checkbox"/> Newspaper | <input type="checkbox"/> Email   | <input type="checkbox"/> Social Media |
| <input type="checkbox"/> Radio     | <input type="checkbox"/> Website |                                       |

# Johnston County Survey Results

Corie Kaiser, Director  
Lara Brooks, Rural Health Analyst

Oklahoma Office of Rural Health



CENTER FOR  
**RURAL HEALTH**  
OSU Center for Health Sciences

Photo Courtesy of David Waters

OSU Center for Rural Health • Tulsa, Oklahoma • @osururalhealth • <http://ruralhealth.okstate.edu>

## Community Health Needs Assessment Requirement for 501(c)(3) Hospitals

- Included in the Affordable Care Act passed in March 2010
- Requirement for all hospitals that submit IRS form 990 (not-for-profit)
  - To begin within taxable year March 23, 2012
  - Must be completed every 3 years
- 3 Financial pieces in addition to conducting a community health needs assessment with substantial input from the community
  - Facilitate a series of meetings to engage local experts and healthcare leaders
  - Examine demographic trends, identification of gaps in services, health disparities, health priorities

## Goals for Today

- Identify health priorities for Johnston County
- Think about these questions:
  - What are the top health needs of the patients/clients I serve?
  - What are the top health needs of the greater community (outside of the hospital or clinic setting)?
  - What am I most proud of in Johnston County?

**How healthy would you rate your community?**

Response Category	No	%
Very Healthy	5	2.9%
Somewhat Healthy	39	22.5%
Neutral	56	32.4%
Somewhat Unhealthy	55	31.8%
Very Unhealthy	18	10.4%
Total	173	100.0%

**How satisfied are you with the Quality of life in Johnston County?**

Response Category	No	%
Very Satisfied	30	17.3%
Somewhat Satisfied	69	39.9%
Neutral	41	23.7%
Somewhat Dissatisfied	29	16.8%
Very Dissatisfied	4	2.3%
Total	173	100.0%

**Are you able to get medical care and medication when needed?**

Response Category	Yes	%	No	%	No Response
General medical care	155	89.6%	17	9.8%	1
Adult specialist care	77	44.5%	82	47.4%	14
Teeth	118	68.2%	48	27.7%	7
Eyes	77	44.5%	89	51.4%	7
Health department	146	84.4%	16	9.2%	11
Emergency Hospital Services	142	82.1%	25	14.5%	6
OB/GYN and Prenatal	60	34.7%	89	51.4%	24
Pediatric general care	96	55.5%	51	29.5%	26
Pediatric specialist	50	28.9%	99	57.2%	24
<b>Urgent</b> care	93	53.8%	66	38.2%	14
Pharmacy/Medication	153	88.4%	13	7.5%	7

**If a healthcare facility/provider were to offer discounted services based on income, would that make healthcare more accessible to you?**

Response Category	No	%
Yes	102	59.0%
No	36	20.8%
Don't know	35	20.2%
Total	173	100.0%

**How do you nav for your health care?**

Response Category	No	%
Employer provided health insurance	68	26.7%
Private health insurance	49	19.2%
Medicare	47	18.4%
Indian health services/Tribal	31	12.2%
Cash (no insurance]	22	8.6%
Medicaid	10	3.9%
Insurance marketplace	9	3.5%
Veterans Administration	9	3.5%
Free health clinic	4	1.6%
Insure Oklahoma	3	1.2%
TRICARE	3	1.2%
Total	255	100.0%

**What types of transportation do you or people in your household use?**

Response Category	No	%
Personal vehicle	170	87.6%
Walking	11	5.7%
Rely on friends or family for rides	7	3.6%
Ride a bike	5	2.6%
Public transportation (TAMM bus, SORTS, SoonerRide)	1	0.5%
Total	194	100.0%

**How far are you able to travel for healthcare services (primary care)?**

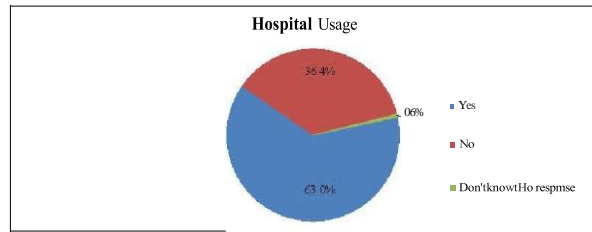
Response Category	No	%
1-10 miles	26	15.0%
11-25 miles	35	20.2%
26-50 miles	46	26.6%
Greater than 50 miles	66	38.2%
Total	173	100.0%

**How far are you able to travel for healthcare services (specialty care)?**

Response Category	No	%
1-10 miles	4	2.3%
11-25 miles	10	5.8%
26-50 miles	48	27.7%
Greater than 50 miles	95	57.2%
No response	12	6.9%
Total	173	100.0%

**Has your household used the services of a hospital in the past 24 months?**

Response Category	No	%
Yes	109	63.0%
No	63	36.4%
Don't know/No response	1	0.6%
Total	173	100.0%



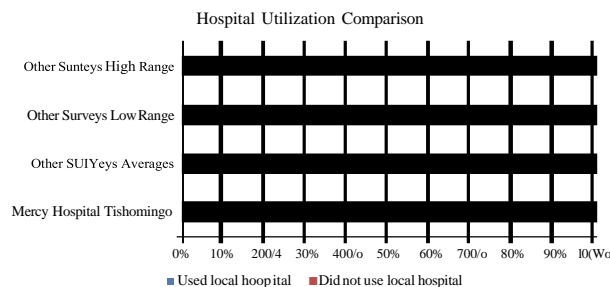
**Where did you receive hospital services?**

Response Category	No	%
Mercy Hospital Tishomingo	52	35.4%
AllianceHealth Durant	25	17.0%
Mercy Hospital Ardmore	17	11.6%
Mercy Hospital Ada	9	6.1%
Chickasaw Nation Medical Center, Ada	8	5.4%
Texoma Medical Center, Denison, TX	7	4.8%
OU Medical Center, Oklahoma City	4	2.7%
Mercy Hospital Oklahoma City	3	2.0%
Oklahoma Heart Hospital, Oklahoma City	2	1.4%
Baylor, Scott & White Surgical Hospital, Sherman, TX	2	1.4%
Atoka County Medical Center, Atoka	2	1.4%
Arbuckle Memorial Hospital, Sulphur	1	0.7%
The Children's Hospital at OU Medical Center, Oklahoma City	1	0.7%
Norman Regional Health System, Norman	1	0.7%
AllianceHealth Madill	1	0.7%
Integrus, No location	1	0.7%
Mercy facility in MO	1	0.7%
Indian Health Services, No location	1	0.7%
Oklahoma Spine Hospital, Oklahoma City	1	0.7%
Integrus Health Baptist Medical Center of Oklahoma City	1	0.7%
Choctaw Nation Healthcare Center, Talihina	1	0.7%
Family Health Center of Southern Oklahoma, Tishomingo	1	0.7%
Mercy Hospital Fort Smith, AR	1	0.7%
Ardmore VA Clinic, Ardmore	1	0.7%
No location	3	2.0%
Total*	147	100.0%

\*Some respondents answered more than once. Average hospitals visited per respondent= 1.35

**Hospital utilization comparison- Mercy Hospital Tishomingo compared to previous community surveys**

Survey Area	Used local hospital	Did not use local hospital
Mercy Hospital Tishomingo	35.4%	64.6%
Other Surveys Averages	56.1%	43.9%
Other Surveys Low Range	25.0%	75.0%
<b>Other Surveys High Range</b>	<b>90.2%</b>	<b>9.8%</b>



**If you responded in question 2 that your household received care at a hospital other than Mercy Hospital Tishomingo, why did you or your family member choose that hospital?**

Response Category	No.	%
availability of specialty care (Including surgery)	34	31.8%
Closer, more convenient location	21	19.6%
Quality of care/Lack of confidence	20	18.7%
Physician referral	14	13.1%
Insurance reasons	12	11.2%
Personal relationship	3	2.8%
Transfer/Emergency	2	1.9%
Been to facility before	1	0.9%
<b>Total*</b>	<b>107</b>	<b>100.0%</b>

\*Some respondents selected more than one category.

**What hospital services were used at Mercy Hospital Tishomingo?**

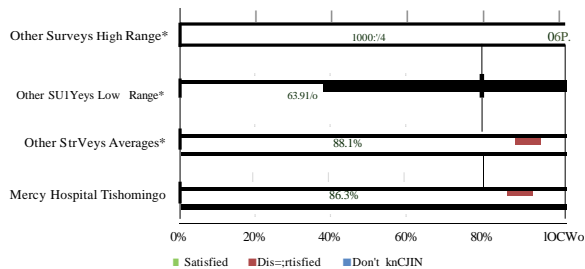
Response Category	No.	%
Emergency room (ER)	39	36.8%
Diagnostic imaging (X-ray, CT, Ultrasound)	27	25.5%
Laboratory	22	20.8%
Outpatient services (including imaging and testing)	7	6.6%
Skilled nursing (swing bed)	5	4.7%
Hospital inpatient	4	3.8%
Respiratory therapy/Pulmonary function test	1	1.9%
<b>Total*</b>	<b>106</b>	<b>100.0%</b>

\*Some respondents selected more than one category. Average number of services used per respondent= 2.04

**How satisfied were you or someone in your household with the services you received at Mercy Hospital Tishomingo?**

Survey Area	Satisfied	Dissatisfied	Don't know
Mercy Hospital Tishomingo	86.3%	9.8%	3.9%
Other Surveys Averages*	88.1%	8.5%	3.4%
Other Surveys Low Range*	63.8%	33.3%	2.9%
Other Surveys High Range*	100.0%	0.0%	0.0%

Satisfaction with Mercy Hospital Tishomingo



**Has your household utilized the services at Family Health Center of Southern Oklahoma in the past 24 months?**

Response Category	No	%
Yes	86	49.7%
No	82	47.4%
Don't know/No response	5	2.9%
Total	173	100.0%

**What services were used at Family Health Center of Southern Oklahoma?**

Response Category	No	%
Preventative care	45	18.1%
Laboratory	40	16.1%
Acute care (illness, injuries, etc.)	38	15.3%
Physical	34	13.7%
Referral to specialist	30	12.1%
Diagnostic imaging (X-ray, Ultrasound, Dexascan]	24	9.7%
Dental	21	8.5%
Behavioral health	9	3.6%
Prescription/Pharmacy	2	0.8%
Holter monitor placement	1	0.4%
Covid test	1	0.4%
Weight management	1	0.4%
No response	2	0.8%
Total*	248	100.0%

\*Some respondents selected more than one category. Average number of services used per respondent= 2.91

**How satisfied was your household with a quality of care received at Family Health Center of Southern Oklahoma?**

Response Category	No	%
Satisfied	74	86.0%
<b>Dissatisfied</b>	5	5.8%
Don't know/No response	7	8.1%
Total	86	100.0%

**Do you think there are enough primary care (family) providers practicing in the Johnston County area?**

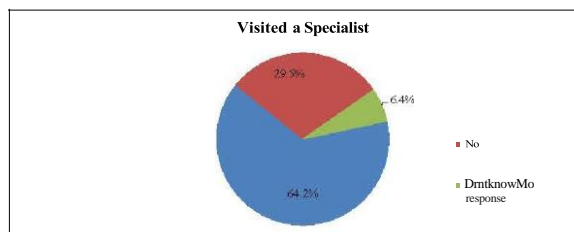
Response Category	No	%
Yes	42	24.3%
No	82	47.4%
Don't know/No response	49	28.3%
Total	173	100.0%

**Are you able to get an appointment, within 48 hours, with your primary care provider when you need one?**

Response Category	No	%
Yes	102	59.0%
No	41	23.7%
Don't know/No response	30	17.3%
Total	173	100.0%

**Has your household been to a specialist in the past 24 months?**

Response Category	No	%
Yes	111	64.2%
No	51	29.5%
Don't know/No response	11	6.4%
<b>Total</b>	<b>173</b>	<b>100.0%</b>



**What type of specialist has your household been to and in which city did you receive that care?**

Type of Specialist	City	No.	%
Cardiologist	Oklahoma City (11); Ardmore (8); Ada (4); Sherman, TX (2); Norman (1); Denison, TX (1); Durant (1); Tulsa (1); Tishomingo (1)	30	15.6%
Orthopedist/OrthoSurg	Ardmore (8); Durant (3); McAlester (1); Dallas, TX (1), McKinney, TX (1) Ardmore (7); Ada (3); Oklahoma City (2); Durant	22	11.5%
OB/GYN	(1); Norman (1); McAlester (1); Denison, TX (1); Sherman, TX (3); Ardmore (3); Durant (2); Oklahoma City (2)	16	8.3%
Gastroenterologist	Oklahoma City (4); Sherman, TX (3); Ardmore (2); Norman (1); Plano, TX (1); No location (1)	12	6.3%
Neurologist/Neurosurg	Ardmore (4); Tulsa (2); Ada (2); Durant (1); Oklahoma City (1); No location (1)	11	5.7%
Otolaryngologist	Edmond (3); Ardmore (3); Oklahoma City (2); Denison, TX (1)	8	4.7%
Rheumatologist	Ardmore (2); Edmond (1); Oklahoma City (1); Durant (1); Norman (1); Anna, TX (1); No location (1)	8	4.2%
Optometrist/Ophthalmologist	Ardmore (4); Norman (1); Oklahoma City (1); Sherman, TX (1)	7	3.6%
Dermatologist	Ardmore (3); Oklahoma City (2); Ada (1); No location (1)	7	3.6%
Oncologist	Ardmore (3); Durant (1); Tulsa (1); No location (1)	6	3.1%
Surgeon	Ardmore (3); Durant (1); Tulsa (1); No location (1)	6	3.1%

What type of specialist has your household been to and in which city did you receive that care? Cont.		
Type of Specialist	City	No. %
Endocrinologist	Ada (1); Oklahoma City (1); Denison, TX (1); Sherman, TX (1); McKinney, TX (1)	5 2.6%
Urologist	Ardmore (2); Durant (2); Oklahoma City (1)	5 2.6%
Pediatric Dentist	Ardmore (2); Sherman, TX (2); Durant (1); Ada (2); Durant (1); Flower Mound, TX (1); No location (1)	5 2.6%
Podiatrist	Oklahoma City (2); Sherman, TX (1)	3 1.6%
Hepatologist	Ardmore (1); Durant (1); Oklahoma City (1)	3 1.6%
Nephrologist	Oklahoma City (2); Norman (1)	3 1.6%
Pulmonologist	Oklahoma City (2)	2 1.0%
Urologist	Durant (1); Denison, TX (1)	2 1.0%
Dentist	Dallas, TX (1); Plano, TX (1)	2 1.0%
Pediatric Gastroenterologist	Ardmore (1)	1 0.5%
Urologist	Oklahoma City (1)	1 0.5%
Oral Surgeon	McAlester (1)	1 0.5%
Orthodontist	Ardmore (1)	1 0.5%
Pain Management	Ada (1)	1 0.5%
Wound Care	Ardmore (1)	1 0.5%
Hematologist	Dallas, TX (1)	1 0.5%
Fertility	Oklahoma City (1)	1 0.5%
Prosthetist	Oklahoma City (1)	1 0.5%
Psychiatrist	Norman (1)	1 0.5%
Total*		192 100.0%

\*Some respondents answered more than once. 111 respondents had seen a specialist. Those 111 respondents reported visiting an average of 1.473 specialists.

Did the specialist request further testing, laboratory work and/or x-rays?		
Response Category	No.	%
Yes	78	70.3%
No	28	25.2%
Don't know/No response	5	4.5%
Total	111	100.0%

If yes, in which city were the tests or laboratory work performed?		
Response Category	No.	%
Ardmore	27	27.6%
Durant	15	15.3%
Oklahoma City	14	14.3%
Ada	14	14.3%
Tishomingo	8	8.2%
Sherman, TX	6	6.1%
Norman	3	3.1%
Denison, TX	2	2.0%
Dallas, TX	2	2.0%
Edmond	2	2.0%
Tulsa	2	2.0%
McAlester	1	1.0%
Milburn	1	1.0%
Plano, TX	1	1.0%
Total*	98	100.0%

\*Some respondents answered more than once. Average responses equal 1.26

**What additional health and wellness services would you like to see offered in Johnston County?**

Response Category	No.	%
Specialists: Pediatrician (6); Specialists in general (2); Urologist (2); OB/GYN (2); Internal Medicine (1); Pulmonologist (1)	14	7.3%
Vision/Optomety	14	7.3%
Urgent care	11	5.7%
Dental/Lower cost dental/Pediatric dental	9	4.7%
Don't know/No additional services	5	2.6%
Mammogram	4	2.1%
More primary care/Greater access to care	4	2.1%
Imaging available at Mercy Hospital Tishomingo: CT (2); MRI (1), Diagnostic lab (1)	4	2.1%
Outpatient rehab/therapy	2	1.0%
Geriatric services/Senior activities/Geriatric provider	2	1.0%
Mental health services	2	1.0%
Gym/Exercise machines	3	1.6%
Student health/Free urgent care for students	2	1.0%
Improved quality of care	3	1.6%
Surgery	2	1.0%
Nutrition education/Counseling	2	1.0%
Women's health services for patients who don't have insurance	1	0.5%
Wellness checks/Routine Preventative care	1	0.5%
Virtual visits	1	0.5%
Free health resources for Johnston County	1	0.5%
More options for care	1	0.5%
Locations in Coleman/Distance to services	1	0.5%
Prosthetics	1	0.5%
No response	103	53.1%
<b>Total</b>	<b>192</b>	<b>100.0%</b>

\*Some respondents answered more than once. Average responses equal 1.11

**Mark your level of agreement with the following statements as they apply in Johnston County**

Response Category	Strongly Agree		Agree		Neutral		Disagree		Strongly Disagree	
	No.	%	No.	%	No.	%	No.	%	No.	%
There are jobs available in the community	10	6.8%	42	31.8%	47	32.0%	38	25.8%	10	6.8%
There are opportunities for advancement	12	8.2%	25	19.0%	50	34.0%	46	31.3%	11	7.5%
The community is a safe place to live	15	10.2%	79	53.7%	43	29.2%	4	2.7%	0	0.0%
Neighbors know, trust, and look out for one another	25	17.1%	71	48.6%	38	26.0%	0	4.1%	0	0.0%
There are support networks for individuals and families (For example, church or family readiness group.)	24	16.5%	63	43.4%	38	26.2%	17	11.7%	3	2.1%

**Mark your level of agreement with the following statements as they apply in Johnston County**

Response Category	Strongly Agree		Agree		Neutral		Disagree		Strongly Disagree	
	No.	%	No.	%	No.	%	No.	%	No.	%
Community is a good place to raise children	24	16.30%	67	45.60%	41	27.9%	10	6.8%	4	
There are opportunities for children to be active	15	10.30%	54	37%	34	23.3%	25	17.1%	16	11.0%
There is access to safe and affordable childcare	9	6.20%	34	23.30%	48	32.9%	29	19.9%	12	
I am satisfied with the school system	14	9.60%	41	28.10%	52	35.6%	14	9.6%	14	
There are networks to support parents	6	4.10%	27	18.50%	50	34.2%	34	23.3%	15	10.3%
This is a community to grow old in	24	16.30%	74	50.30%	31	21.1%	10	6.8%	7	
There are opportunities for older adults to be active	11	7.50%	35	23.80%	45	30.6%	35	23.8%	15	10.2%
There are services for older adults	9	14.70%	14	22.00%	22	36.1%	9	14.7%	4	
There are networks of support for the elderly living alone	6	4.10%	21	14.40%	5	3.90%	42	28.8%	14	9.6%

**In your opinion, which of the following would make it easier for you to access healthcare services?**

Response Category	No.	%
Lowering the cost	62	18.6%
Increasing the number of providers who are covered by your insurance	61	18.3%
Reducing wait times to get in to see providers	51	15.3%
Knowing I will be treated with respect and included in my healthcare decisions	48	14.4%
I do not have difficulty accessing healthcare services	47	14.1%
Mobile clinic unit to visit my community regularly	28	8.4%
Providing transportation services	10	3.0%
No response	26	7.8%
Total*	333	100.0%

\*Some respondents answered more than once. Average responses equal 1.92

What items cause you the most stress? Check all that apply			
Response Category	No.	%	% of Respondents
Money/Finances	93	22.0%	53.8%
Work/Job	61	14.5%	35.3%
Family responsibilities	43	10.2%	24.9%
Mental or physical health conditions	43	10.2%	24.9%
Major life event	28	6.6%	16.2%
Parenting/Children	28	6.6%	16.2%
Poor or unstable housing	16	3.8%	9.2%
Relationship difficulties (friends, spouse, etc.)	15	3.6%	8.7%
School	14	3.3%	8.1%
Unemployment	11	2.6%	6.4%
Substance abuse	9	2.1%	5.2%
Lack of safety/Crime	8	1.9%	4.6%
Discrimination	6	1.4%	3.5%
Abuse	4	0.9%	2.3%
No stress	2	0.5%	1.2%
...aring for loved one/Elder care	1	0.2%	0.6%
Lack of transportation	1	0.2%	0.6%
Illegal drugs	1	0.2%	0.6%
Legal immigration	1	0.2%	0.6%
Paperwork at appointments	1	0.2%	0.6%
Lack of infrastructure	1	0.2%	0.6%
Personal	1	0.2%	0.6%
No response	34	8.1%	19.7%
Total*	422	100.0%	1

\*Some respondents answered more than once; % Respondents indicates the percentage of respondents that identified each response.

\*\*Italicized responses were provided as "other"

What are the most common ways you manage your stress? Check all that apply			
Response Category	No.	%	% of Respondents
Spend time with family and friends	76	11.7%	43.9%
Exercise, walk or go for a bike ride	60	9.2%	34.7%
Watch television or movies	58	8.9%	33.5%
Listen to music	55	8.4%	31.8%
Pray or go to church	55	8.4%	31.8%
Read	53	8.1%	30.6%
Clean or do chores	53	8.1%	30.6%
Nap	35	5.4%	20.2%
Eat	32	4.9%	18.5%
Go for a drive	25	3.8%	14.5%
Play a video game or surf the internet	25	3.8%	14.5%
Shop	22	3.4%	12.7%
Get a massage or spa treatment	18	2.8%	10.4%
Meditation	11	1.7%	6.4%
Nothing	11	1.7%	6.4%
See a mental health professional	10	1.5%	5.8%
Drink alcohol	6	0.9%	3.5%
Smoke/Vape/Dip/Chew	5	0.8%	2.9%
Play sports	4	0.6%	2.3%
Volunteer	2	0.3%	1.2%
Cannabis	2	0.3%	1.2%
Gamble	1	0.2%	0.6%
Outdoors: fish, hunt	1	0.2%	0.6%
Yard and garden work	1	0.2%	0.6%
Clone	1	0.2%	0.6%
Craft	1	0.2%	0.6%
Fun/Party	1	0.2%	0.6%
Getaway	1	0.2%	0.6%
No response	27	4.1%	15.6%
Total*	652	100.0%	1

\*Some respondents answered more than once; % Respondents indicates the percentage of respondents that identified each response.

\*\*Italicized responses were provided as "other"

What do you think are the biggest health problems in Johnston County? Check all that apply			
Response Category	No.	% of Respondents	% of Respondents
Substance abuse	115	16.1%	66.5%
Poverty	78	10.9%	45.1%
Mental health problems	77	10.8%	44.5%
Obesity	61	8.5%	35.3%
Child abuse/Neglect	44	6.1%	25.4%
Diabetes	44	6.1%	25.4%
High blood pressure	43	6.0%	24.9%
Aging problems (arthritis, hearing loss, etc.)	39	5.4%	<b>22.5%</b>
Heart disease and stroke	32	4.5%	18.5%
Dental problems	32	4.5%	18.5%
Domestic violence	31	4.3%	17.9%
Respiration/Lung disease	18	2.5%	10.4%
Motor vehicle crash injuries	16	2.2%	9.2%
Sexually transmitted diseases/Infections (STI/STD)	16	2.2%	9.2%
Suicide	9	1.3%	<b>5.2%</b>
Firearm-related injuries	6	0.8%	3.5%
Homicide		0.7%	2.9%
Rape/Sexual assault		0.4%	1.7%
Infant deaths		0.4%	1.7%
Lack of mental health services/resources		0.4%	1.7%
Infectious diseases (hepatitis, TB)		0.3%	1.2%
<b>HIV/AIDS</b>		0.1%	0.6%
<i>Child neglect</i>		0.1%	0.6%
<i>Lack of activities for children and young adults</i>		0.1%	0.6%
<i>Family life/Family structure</i>		0.1%	0.6%
No response/Don't know	34	4.7%	19.7%
<b>Total</b>	<b>716</b>	<b>100.0%</b>	<b>100.0%</b>

\*Some respondents answered more than once; % Respondents indicates the percentage of respondents that identified each response.

\*\*Italicized responses were provided as "other"

What do you think are the most important factors for a quality of life in a "Healthy Community?" Check all that apply			
Response Category	No.	% of Respondents	% of Respondents
Good jobs and healthy economy	128	8.3%	74.0%
Access to healthcare (ex. Family doctor)	122	7.9%	70.5%
Good schools	110	7.1%	63.6%
Affordable, safe housing	109	7.1%	63.0%
Low crime/Safe neighborhoods	94	6.1%	54.3%
Good place to raise children	92	6.0%	53.2%
Healthy behaviors and lifestyles	92	6.0%	53.2%
Clean environment	92	6.0%	53.2%
Strong family life	91	5.9%	52.6%
Financial stability	90	5.8%	52.0%
Parks and recreation	86	5.6%	49.7%
Religious or spiritual values	82	5.3%	47.4%
Low levels of child abuse	71	4.6%	41.0%
Arts and cultural events	56	3.6%	32.4%
Access to safe, affordable transportation	56	3.6%	32.4%
Racial justice and equality	50	3.2%	28.9%
Low infant deaths	47	3.1%	27.2%
Low adult death and disease rates	41	2.7%	23.7%
Senior activities	1	0.1%	0.6%
Affordable childcare	1	0.1%	0.6%
Don't know/No response	25	<b>1.9%</b>	16.8%
<b>Total</b>	<b>1540</b>	<b>100.0%</b>	<b>100.0%</b>

\*Some respondents answered more than once; % Respondents indicates the percentage of respondents that identified each response.

\*\*Italicized responses were provided as "other"

**Where do you shop for food or groceries?**

Response Category	No	%
Grocery store (including Walmart, Sams, Crest, Aldi, etc.)	154	39.7%
Dollar store	89	22.9%
I/We eat out	41	10.6%
<b>Farmers market</b>	34	8.8%
Convenience store/Gas stations	17	4.4%
Community market	13	3.4%
Church/Food pantry	7	1.8%
Health food store	3	0.8%
Online stores/Services	2	0.5%
Braums	1	0.3%
Texas	1	0.3%
Don't know/No response	26	6.7%
<b>Total*</b>	<b>388</b>	<b>100.0%</b>

\*Some respondents answered more than once. Average responses equal 2.24

**Which of the following, if any, do you think would help you and your household eat more fruits and vegetables?**

Response Category	No	%
Finding fruits and vegetables I enjoy eating	60	21.5%
<b>Having a better selection of them at my grocery store</b>	59	21.1%
Having more time in my schedule to prepare them	33	11.8%
Having a grocery store closer to where I live	33	11.8%
Knowing how to prepare them	19	6.8%
If I could buy more of them with EBT/Foodshare or SNAP benefits	16	5.7%
Access to affordable fruits and vegetables	14	5.0%
Having reliable transportation to the store to buy them	7	2.5%
Having someone else fix them	1	0.4%
Health protein and gluten free items	1	0.4%
<b>More time to grow own</b>	1	0.4%
Don't know/No response	35	12.5%
<b>Total*</b>	<b>279</b>	<b>100.0%</b>

\*Some respondents answered more than once. Average responses equal 1.61

**Do you have access to hi2h-speed internet'**

Response Category	No	%
Yes	111	64.2%
No	34	19.7%
Don't know/No response	28	16.2%
Total	173	100.0%

**What is the main reason you do not have internet access?**

Response Category	No	%
Cost is too expensive	20	39.2%
Internet service is not available	19	37.3%
I do not want it	4	7.8%
I do not know how to use it	3	5.9%
I do not need it	3	5.9%
Do not know how to connect device to internet	1	2.0%
Do have internet, but not high speed	1	2.0%
Total*	51	100.0%

**Zip Code of Residence**

Response Category	No	%
<b>73460- Tishomingo</b>	51	29.5%
<b>73432- Coleman</b>	17	9.8%
<b>73461- Wapanucka</b>	15	8.7%
<b>73455- Ravia</b>	11	6.4%
<b>73450- Milburn</b>	9	5.2%
<b>74856- Mill Creek</b>	6	3.5%
74525- Atoka	6	3.5%
73401- Ardmore	4	2.3%
<b>73447- Mannsville</b>	4	2.3%
74533- Caney	3	1.7%
74530- Bromide	3	1.7%
73446- Madill	2	1.2%
74820-Ada	2	1.2%
73439- Hodgen	2	1.2%
74748- Kenefic	1	0.6%
74871- Stonewall	1	0.6%
75469- Stringtown	1	0.6%
74842- Fittstown	1	0.6%
74836- Connerville	1	0.6%
74735- Fort Towson	1	0.6%
74701- Durant	1	0.6%
74538- Coalgate	1	0.6%
73086- Sulphur	1	0.6%
No response	29	16.8%
Total	173	100.0%

*\*Denotes zip codes within Johnston County*

**What ethnic group do you most identify with?**

Response Category	No	%
White/Caucasian	121	65.4%
American Indian/Alaskan Native	28	15.1%
Hispanic/Latino	3	1.6%
African American/Black	1	0.5%
Italian	1	0.5%
<b>No response</b>	31	16.8%
<b>Total</b>	<b>185</b>	<b>100.0%</b>

**How would you describe your financial situation?**

Response Category	No	%
I live paycheck to paycheck	70	33.0%
I am financially secure	61	28.8%
<b>Money is a major stress or in my life</b>	40	18.9%
I don't have enough money to pay the bills to meet household needs	12	5.7%
No response	29	13.7%
<b>Total</b>	<b>212</b>	<b>100.0%</b>

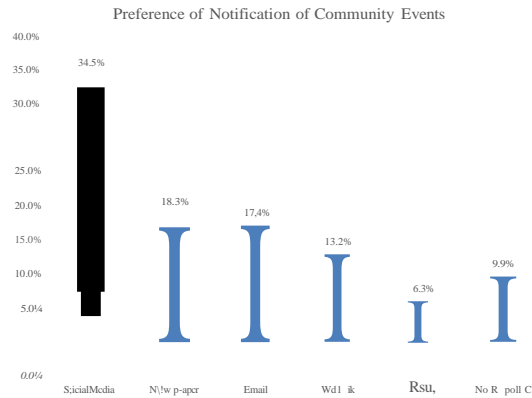
**\*Some respondents answered more than once. Average responses equal 1.23**

**What is the highest level of school that you have completed?**

Response Category	No	%
Some college, but no degree	32	18.5%
Graduate-level degree	30	17.3%
2-year college degree	27	15.6%
4-year college degree	27	15.6%
High school diploma (or GED)	25	14.5%
Some high school, but not diploma	3	1.7%
Primary school	1	0.6%
No response	28	16.2%
<b>Total</b>	<b>173</b>	<b>100.0%</b>

### How would you prefer to be notified of community events?

Outlet	No	%
Social Media	105	34.5%
Newspaper	57	18.8%
Email	53	17.4%
Website	40	13.2%
Radio	19	6.3%
No Response	30	9.9%
Total	304	100.0%



## Goals for Today

- Identify health priorities for Johnston County
- Think about these questions:
  - What are the top health needs of the patients/clients I serve?
  - What are the top health needs of the greater community (outside of the hospital or clinic setting)?
  - What am I most proud of in Johnston County?